

Weekly note on COVID in Bolton – 10th March 2021

Local COVID Alert Level:

National lockdown: Stay at Home, from 5th January

This note brings together a summary of the information from a range of indicators of cases of COVID-19 amongst residents of Bolton. The information is based on data from official sources. It presents the picture of our understanding according to the latest available data on the date of the note's release. No single indicator gives the complete picture; counts and rates will vary from day to day and are interpreted alongside other indicators and contextual information including testing rates, positivity, our understanding of what's driving transmission locally and within neighbouring areas. The period to which the indicators apply may vary and are stated within the text.

Data on COVID-19 in Bolton is available at <https://www.boltonjsna.org.uk/coronavirus>

Positive cases from swab testing (Pillar 1 and Pillar 2)

- The number of positive cases amongst Bolton residents remains high; there have been on average 43 cases per day in the week to 4th March. Most positive cases are via Pillar 2 (community swab testing), with a smaller number of cases diagnosed via Pillar 1 (NHS and PHE testing for those with a clinical need, and health and care workers)
- New COVID-19 cases remain widespread across the borough
- The largest proportion of cases are White British (48%), followed by cases among residents from Asian backgrounds (22%)
- The largest number of cases continue to be among those from the most disadvantaged parts of the borough, although in the previous fortnight residents from more affluent areas have been overrepresented, this has since reduced.
- The variant that was first detected in Kent/SW just before Christmas (B.1.1.7) is now the dominant strain circulating within Bolton as it is across the country

7-day rate of cases per 100,000 population

The current rate is estimated to be 105.4 for the 7 days ending 4th March 2021 which is still high though is down from the previous week (151.3). This rate is an estimate and may change. Case rates have shown a downward trend since the second week of January and have continued to reduce, with Bolton recording its lowest rate since September 2020. Case rates amongst those aged 60+ remain relatively high, though there have been large reductions in the last 2 weeks, and rates remain highest within the age groups of 25-54 year olds.

Test numbers and Positivity

Testing rates have been trending upwards throughout January and into February. The proportion of tests reported as positive, known as 'positivity', remains high at 5.5% for the 7 days ending 4th March.

Situations and outbreaks

Situations investigated in the last week include workplaces, care homes, and educational settings.

Regional R

The R value for the North West is 0.7-0.9 as of Friday 5th March. When there is a significant amount of variability across a region, for example due to a local outbreak, then a single average value does not accurately reflect the way infections are changing throughout the region.

NHS activity

We are continuing to see steady numbers of people who required hospital admission and the number of patients requiring critical care for serious illness has similarly remained relatively steady in the last 7 days. The number of daily hospital deaths has been slowly reducing and has continued on this path over the last week.

Deaths with COVID-19 and deaths from all causes

Definitions:

Pillar 1: swab testing in Public Health England (PHE) labs and NHS hospitals for those with a clinical need, and health and care worker

Pillar 2: swab testing for the wider population, as set out in government guidance and delivered with Deloitte

Sadly, there have been a total of 749 deaths with COVID-19 amongst Bolton residents (occurred up to 26th February 2021, registered up to 6th March 2021).

Ward level data

In the last week cases have been reported in all wards in the borough. From 22nd February – 28th February, Rumworth ward, Halliwell ward and Great Lever ward saw the highest number of cases; most wards had seen decreases in case rates from the previous week.

Figure 1.

Daily confirmed cases of COVID-19 for Bolton, with Pillar 1 and Pillar 2 cases inclusive

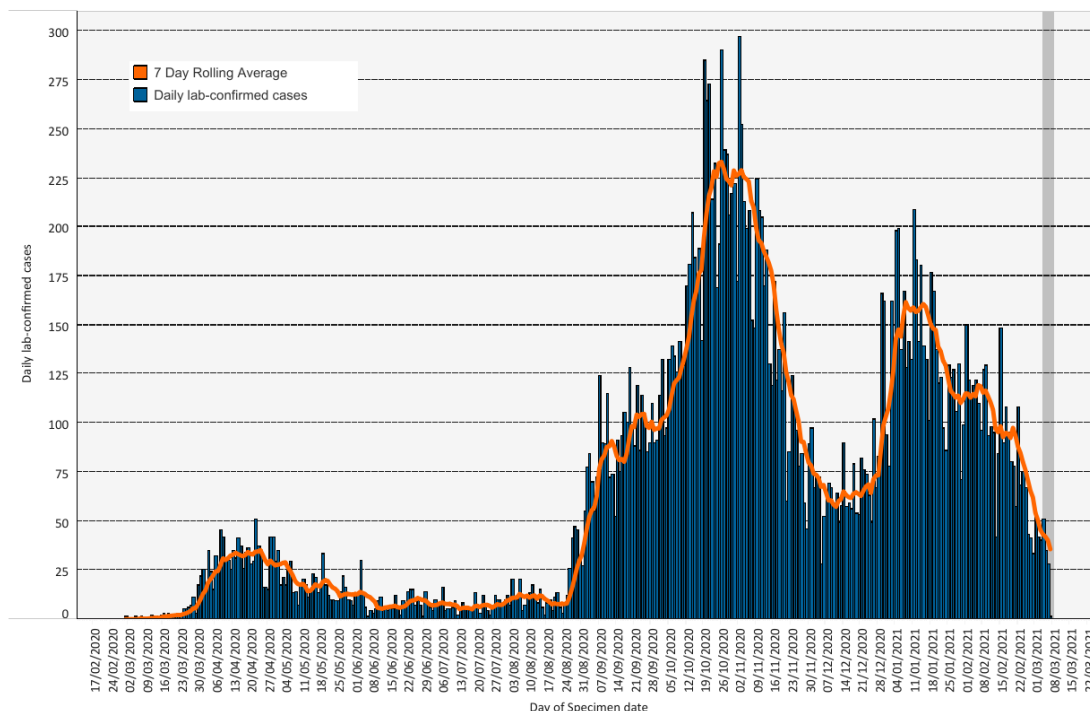
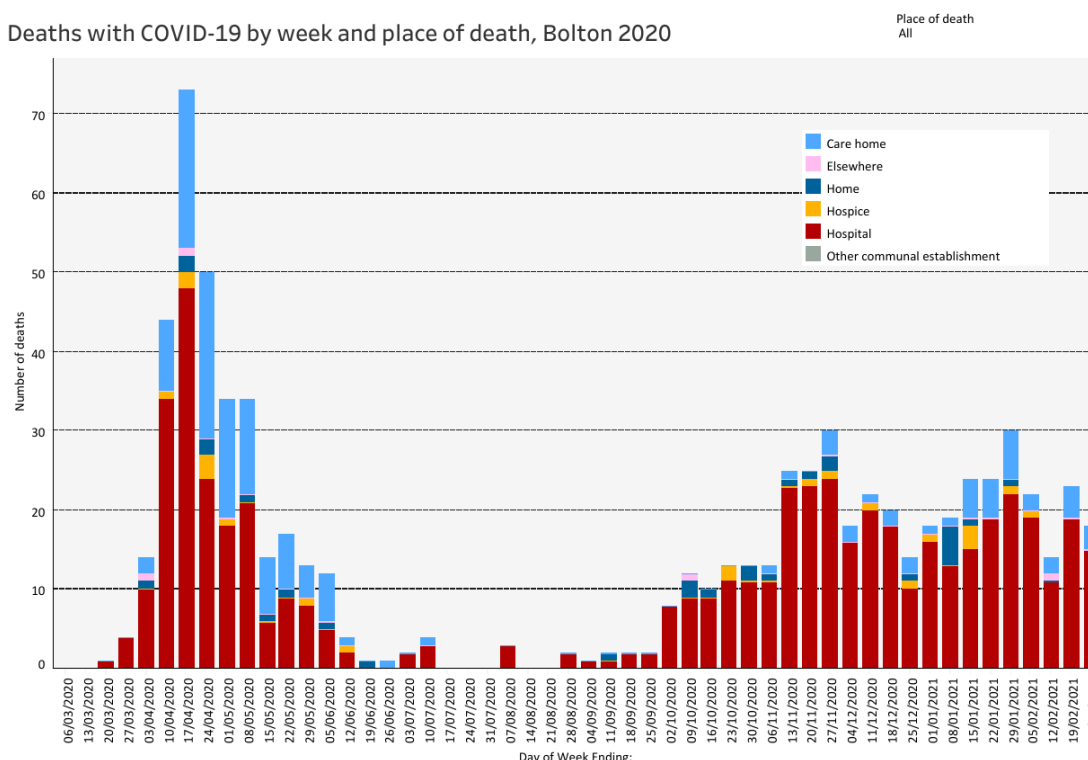


Figure 2.

Deaths with COVID-19 by week and place of death, Bolton 2020



Prepared by Chris Kirk, Public Health Analyst, with support from Bolton COVID-19 Data Cell. Queries should be sent to: PublicHealthDirectorate@bolton.gov.uk

Definitions:

Pillar 1: swab testing in Public Health England (PHE) labs and NHS hospitals for those with a clinical need, and health and care worker

Pillar 2: swab testing for the wider population, as set out in government guidance and delivered with Deloitte