

Weekly note on COVID in Bolton – 10th February 2021

<i>Local COVID Alert Level:</i>	National lockdown: Stay at Home, from 5 th January
---------------------------------	---

This note brings together a summary of the information from a range of indicators of cases of COVID-19 amongst residents of Bolton. The information is based on data from official sources. It presents the picture of our understanding according to the latest available data on the date of the note's release. No single indicator gives the complete picture; counts and rates will vary from day to day and are interpreted alongside other indicators and contextual information including testing rates, positivity, our understanding of what's driving transmission locally and within neighbouring areas. The period to which the indicators apply may vary and are stated within the text.

Data on COVID-19 in Bolton is available at <https://www.boltonjsna.org.uk/coronavirus>

Positive cases from swab testing (Pillar 1 and Pillar 2)

- The number of positive cases amongst Bolton residents remains high; there have been on average 114 cases per day in the week to 4th February. Most positive cases are via Pillar 2 (community swab testing), with a smaller number of cases diagnosed via Pillar 1 (NHS and PHE testing for those with a clinical need, and health and care workers)
- New COVID-19 cases remain widespread across the borough
- The largest number of cases are White British (59%), followed by cases among residents from Asian backgrounds (16%)
- The largest number of cases continue to be among those from the most disadvantaged parts of the borough, but in recent weeks residents from more affluent areas have been overrepresented although still smaller in number
- The variant B.1.1.7 is now the dominant strain circulating within Bolton as it is across the country

7-day rate of cases per 100,000 population

The current rate is estimated to be 276.5 for the 7 days ending 5th February which is similar to the previous week. This rate is an estimate and may change. Case rates have shown a downward trend since the second week of January though appear to have plateaued in recent days. The rate remains high and decreases have been small. Case rates amongst those aged 60+ remains high, despite reductions in the last 2 weeks, and rates are continuing to remain high amongst working age groups, particularly 25-54 year olds.

Test numbers and Positivity

Testing rates reduced over the Christmas and New Year period but picked up again throughout January. Proportion of tests reported as positive, known as 'positivity', remains high at 11.7% for the 7 days ending 4th February.

Situations and outbreaks

Situations investigated in the last week in a wide range of settings including care homes, workplaces and educational settings.

Regional R

The R value for the North West is 0.7-1.0 as of Friday 5th February. When there is a significant amount of variability across a region, for example due to a local outbreak, then a single average value does not accurately reflect the way infections are changing throughout the region.

NHS activity

The current levels of infection continue to translate into hospital admissions. Data available to us internally indicate admissions to hospital for COVID-19 have significantly increased as are the number of patients requiring critical care for serious illness but have remained relatively steady in the last 7 days. The number of daily hospital deaths has been slowly reducing over the last week.

Deaths with COVID-19 and deaths from all causes

Definitions:

Pillar 1: swab testing in Public Health England (PHE) labs and NHS hospitals for those with a clinical need, and health and care worker

Pillar 2: swab testing for the wider population, as set out in government guidance and delivered with Deloitte

Sadly, there have been a total of 669 deaths with COVID-19 amongst Bolton residents (occurred up to 29th January 2021, registered up to 6th February 2021).

Ward level data

In the last week cases have been reported in all wards in the borough. From 25th January – 31st January, Horwich North East ward and Westhoughton South saw the highest number of cases. Both wards had a significant rise in case rates from the previous week.

Figure 1.

Daily confirmed cases of COVID-19 for Bolton, with Pillar 1 and Pillar 2 cases inclusive

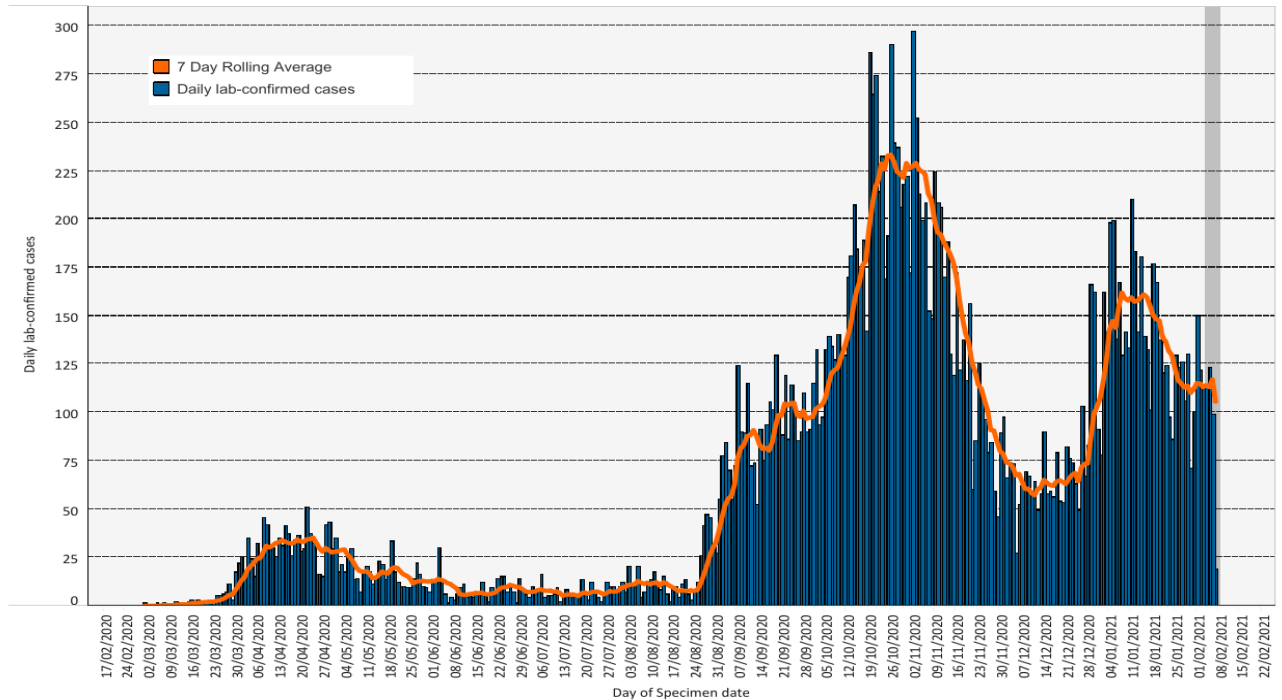
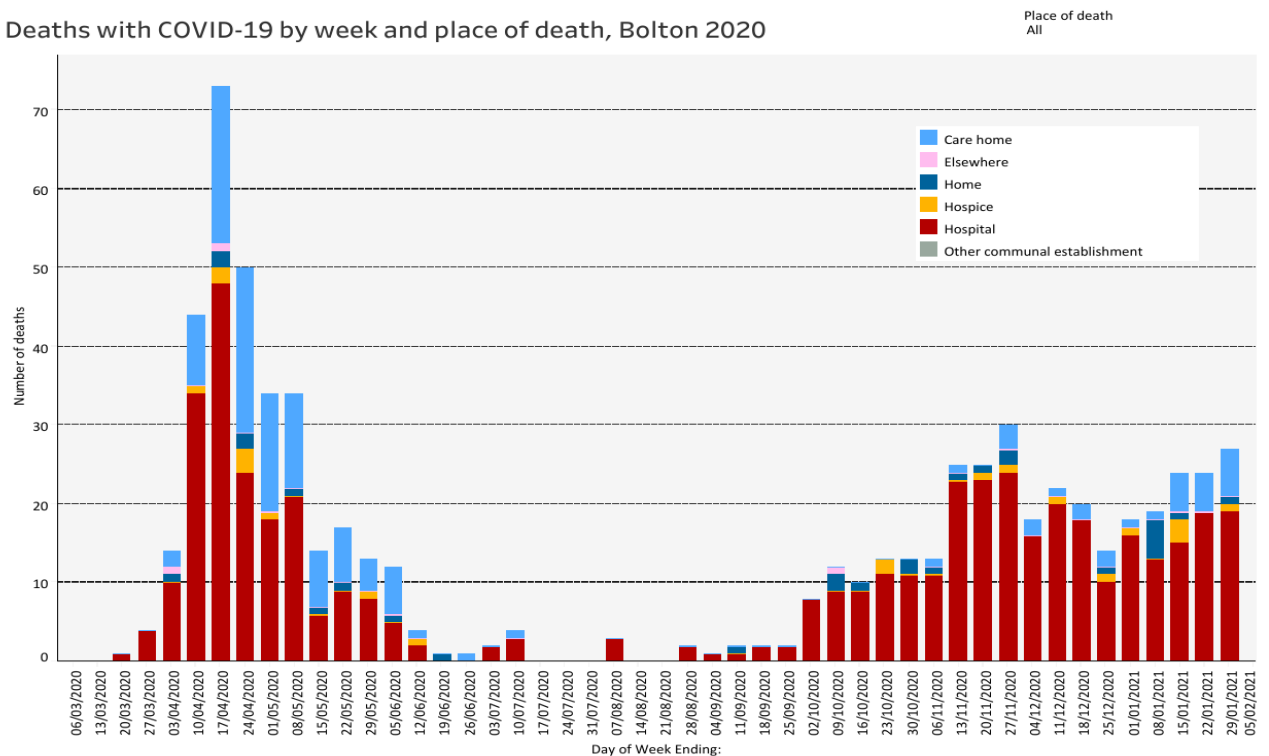


Figure 2.

Deaths with COVID-19 by week and place of death, Bolton 2020



Prepared by Chris Kirk, Public Health Analyst, with support from Bolton COVID-19 Data Cell. Queries should be sent to: PublicHealthDirectorate@bolton.gov.uk

Definitions:

Pillar 1: swab testing in Public Health England (PHE) labs and NHS hospitals for those with a clinical need, and health and care worker
Pillar 2: swab testing for the wider population, as set out in government guidance and delivered with Deloittes