

Weekly note on COVID in Bolton – 23rd September 2020

<i>Watchlist status:</i>	Intervention
--------------------------	--------------

This note brings together a summary of the information from a range of indicators of cases of COVID-19 amongst residents of Bolton. The information is based on data from official sources. It presents the picture of our understanding according to the latest available data on the date of the note's release. No single indicator gives the complete picture; counts and rates will vary from day to day and are interpreted alongside other indicators and contextual information including testing rates, positivity, our understanding of what's driving transmission locally and within neighbouring areas. The period to which the indicators apply may vary and are stated within the text.

Data on COVID-19 in Bolton is available at <https://www.boltonjsna.org.uk/coronavirus>

Positive cases from swab testing (Pillar 1 and Pillar 2)

- The number of positive cases amongst Bolton residents remains high, with on average 84 cases per day in the week to 18th September. Most positive cases came through Pillar 2 (community swab testing), though we are seeing an increase in the number of cases in Pillar 1 (NHS and PHE testing for those with a clinical need, and health and care workers)
- New COVID-19 cases remain widespread across the borough
- The age profile is changing and although the young age group still sees the highest frequency of cases, there are an increasing proportion in older age groups and school age children
- There remains a disproportionate number of cases from the most disadvantaged parts of the borough, although this is becoming less marked. Over half of cases are White British ethnicity

7-day rate of cases per 100,000 population

The current rate is estimated to be 203.8 for the 7 days ending 18th September. This rate is an estimate and may change.

Test numbers and Positivity

Testing activity has increased. The proportion of tests reported as positive, known as 'positivity', was 11.7%.

Community clusters and outbreaks

The highest number of situations investigated in the last 14 days were in workplaces. A small number of situations have been investigated in schools, hospitality settings and care homes.

Regional R

The R value for the North West is 1.2-1.5 as of Friday 18th September. When there is a significant amount of variability across a region, for example due to a local outbreak, then a single average value does not accurately reflect the way infections are changing throughout the region.

NHS activity

- Data available to us internally indicate admissions to hospital for COVID-19 are increasing
- We are also seeing increases in calls to NHS 111 and online COVID related enquiries

Deaths with COVID-19 and deaths from all causes

Sadly, there have been a total of 329 deaths with COVID-19 amongst Bolton residents (registered up to 19th September).

Ward level data

In the last week cases have been reported on all wards in the borough. From the 14th September to 21st September, Rumworth and Heaton and Lostock wards have the highest case rates in Bolton.

Definitions:

Pillar 1: swab testing in Public Health England (PHE) labs and NHS hospitals for those with a clinical need, and health and care worker

Pillar 2: swab testing for the wider population, as set out in government guidance and delivered with Deloittes

Outbreak: two or more confirmed cases associated with a workplace, care home or educational setting with onset dates within 14 days

Both Harper Green and Great Lever wards also had significant increases in case numbers from the previous week.

Figure 1.

Daily confirmed cases of COVID-19 for Bolton, with Pillar 1 and Pillar 2 cases inclusive

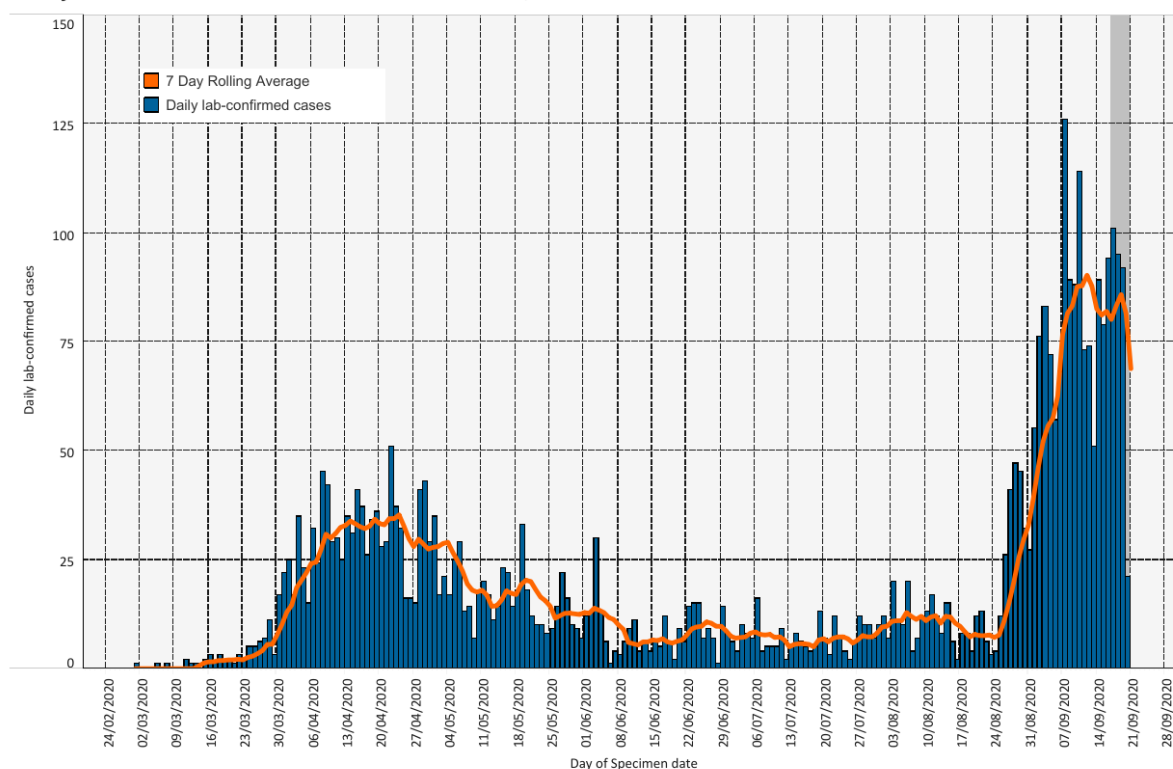
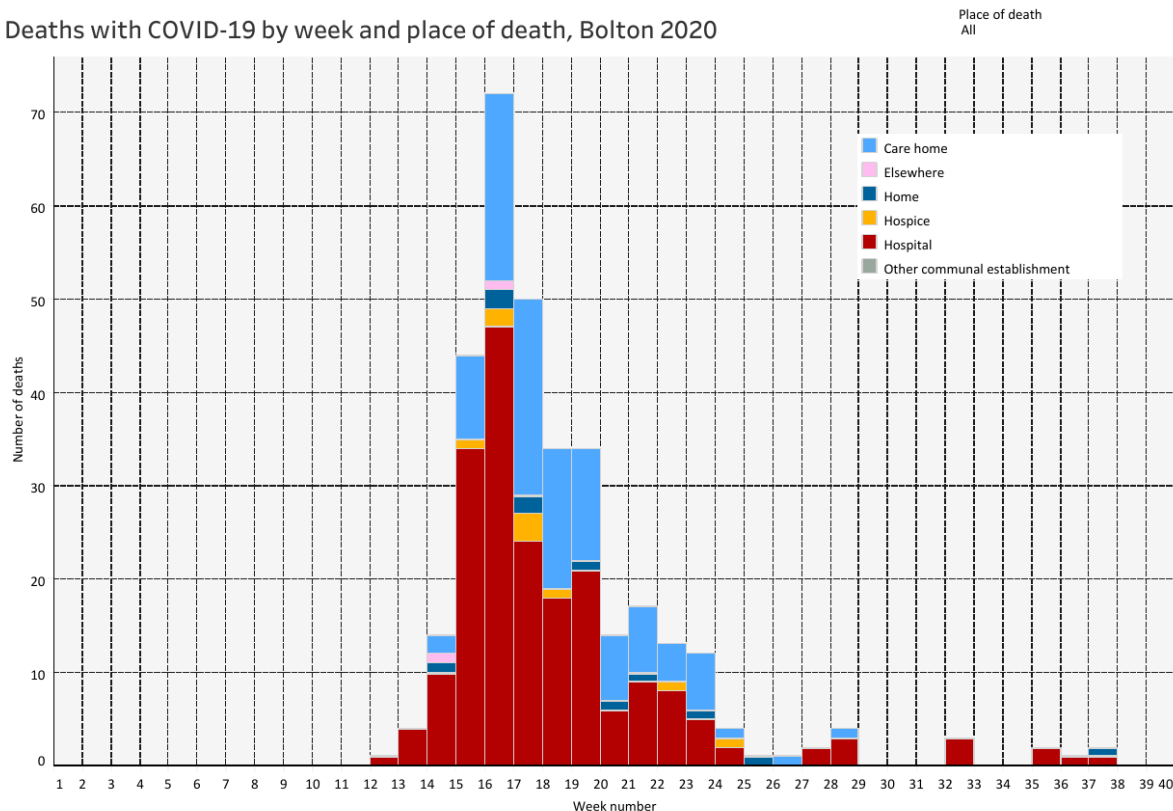


Figure 2.

Deaths with COVID-19 by week and place of death, Bolton 2020



Prepared by Lynn Donkin, Assistant Director/Consultant in Public Health with support from Bolton COVID-19 Data Cell. Queries should be sent to: PublicHealthDirectorate@bolton.gov.uk

Definitions:

Pillar 1: swab testing in Public Health England (PHE) labs and NHS hospitals for those with a clinical need, and health and care worker

Pillar 2: swab testing for the wider population, as set out in government guidance and delivered with Deloitte

Outbreak: two or more confirmed cases associated with a workplace, care home or educational setting with onset dates within 14 days