

Weekly note on COVID in Bolton – 16th September 2020

<i>Watchlist status:</i>	Intervention
--------------------------	--------------

This note brings together a summary of the information from a range of indicators of cases of COVID-19 amongst residents of Bolton. The information is based on data from official sources. It presents the picture of our understanding according to the latest available data on the date of the note's release. No single indicator gives the complete picture; counts and rates will vary from day to day and are interpreted alongside other indicators and contextual information including testing rates, positivity, our understanding of what's driving transmission locally and within neighbouring areas. The period to which the indicators apply may vary and are stated within the text.

Data on COVID-19 in Bolton is available at <https://www.boltonjsna.org.uk/coronavirus>

Positive cases from swab testing (Pillar 1 and Pillar 2)

- The number of positive cases amongst Bolton residents continues to increase, with on average 86.7 cases per day in the week to 10th September. Most positive cases came through Pillar 2 (community swab testing), though we are seeing some increase in the number of cases in Pillar 1 (NHS and PHE testing for those with a clinical need, and health and care workers)
- New COVID-19 cases are spread across the borough and are not limited to a single neighbourhood, community, or workplace. Cases are still heavily concentrated among younger adults (29% aged 16-24; 20% aged 25-34) but we are seeing changes in the age distribution with increases in older age groups and school age children
- A disproportionate number of cases are from the most disadvantaged parts of the borough, although this is becoming less marked. Over half are White British ethnicity

7-day rate of cases per 100,000 population

- The current rate is estimated to be 212.7 for the 7 days ending 10th September

Test numbers and Positivity

- We are continuing to see an increase in the number of people going for testing. The proportion of tests reported as positive, known as 'positivity', is higher than last week, at 11.8% for the 7 days to the 10th September

Community clusters and outbreaks

Over the past week, we have commenced investigations into 7 situations of potentially linked cases. These situations are in a range of settings including workplaces, schools and the retail sector

Regional R

- The R value for the North West is 1.1-1.3 as of Friday 11th September. When there is a significant amount of variability across a region, for example due to a local outbreak, then a single average value does not accurately reflect the way infections are changing throughout the region.

NHS activity

- Data available to us internally indicate admissions to hospital for COVID-19 are increasing. The age profile is younger than seen earlier in the year with a higher proportion aged under 65
- We are also seeing increases in calls to NHS 111 and online COVID related enquiries

Deaths with COVID-19 and deaths from all causes

- Sadly, there have been a total of 327 deaths with COVID-19 amongst Bolton residents (registered up to 12th September)

Definitions:

Pillar 1: swab testing in Public Health England (PHE) labs and NHS hospitals for those with a clinical need, and health and care worker

Pillar 2: swab testing for the wider population, as set out in government guidance and delivered with Deloittes

Outbreak: two or more confirmed cases associated with a workplace, care home or educational setting with onset dates within 14 days

Ward level data

- In the last week cases have been reported on all wards in the borough. Except for Brightmet and Tonge with the Haulgh, all wards have seen an increase in cases compared to the previous week. However, rates in both Brightmet and Tonge with the Haulgh wards remain the highest in the borough, despite reductions.

Figure 1.

Daily confirmed cases of COVID-19 for Bolton, with Pillar 1 and Pillar 2 cases inclusive

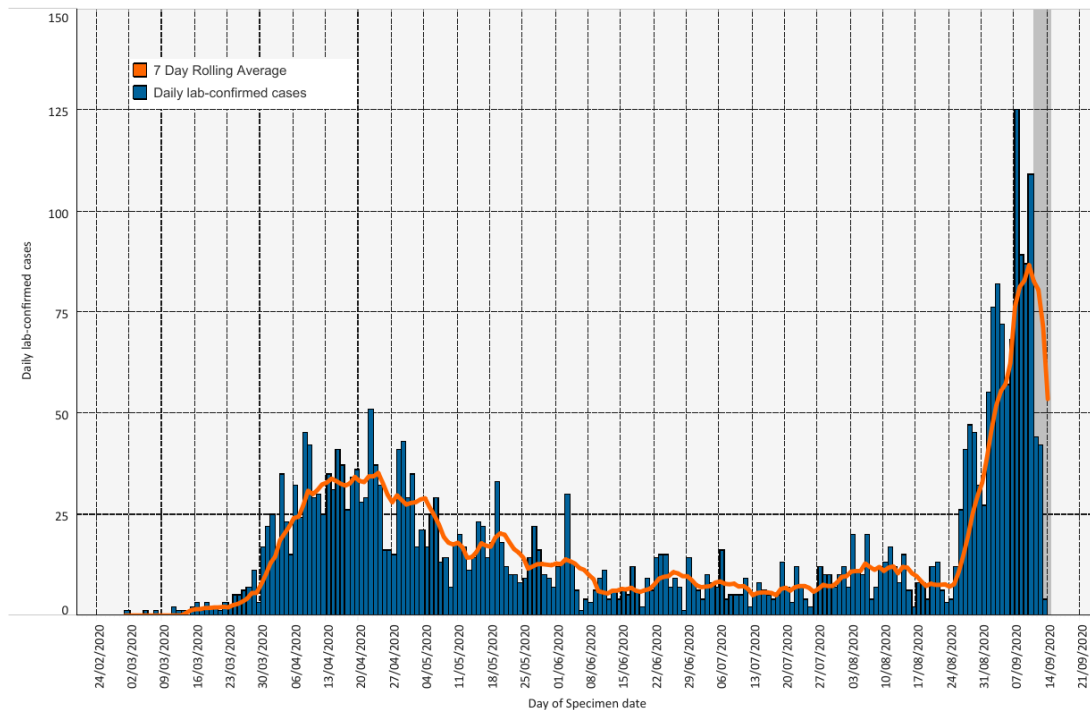
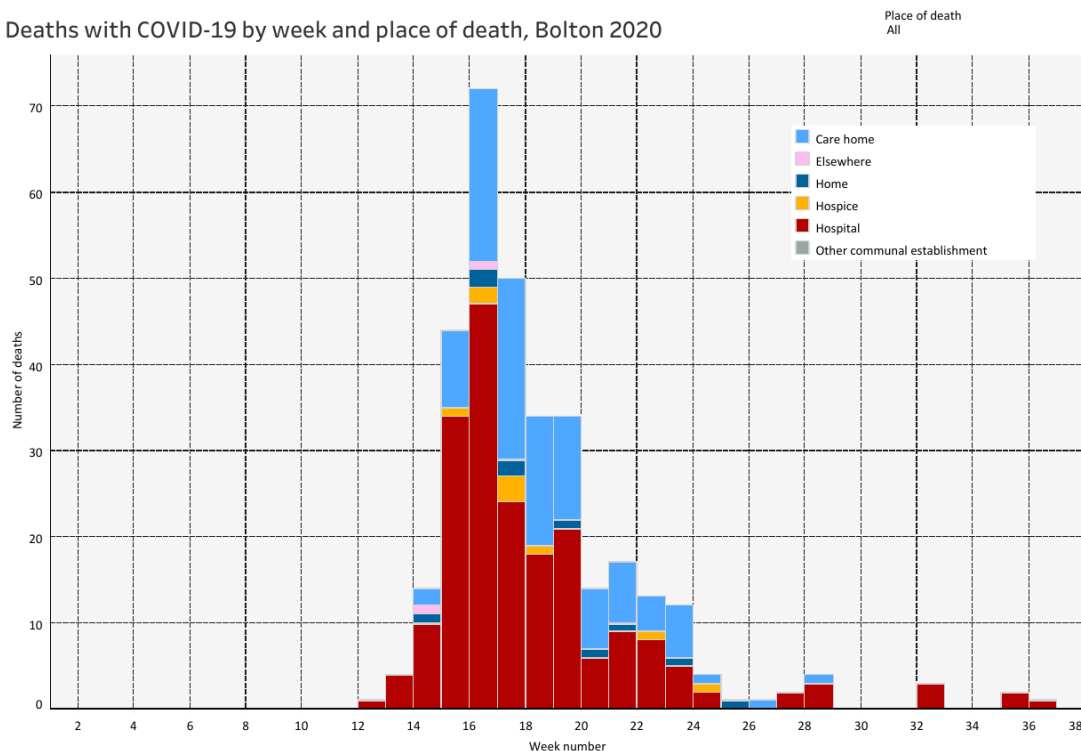


Figure 2.

Deaths with COVID-19 by week and place of death, Bolton 2020



Prepared by Lynn Donkin, Assistant Director/Consultant in Public Health with support from Bolton COVID-19 Data Cell. Queries should be sent to: PublicHealthDirectorate@bolton.gov.uk

Definitions:

Pillar 1: swab testing in Public Health England (PHE) labs and NHS hospitals for those with a clinical need, and health and care worker

Pillar 2: swab testing for the wider population, as set out in government guidance and delivered with Deloittes

Outbreak: two or more confirmed cases associated with a workplace, care home or educational setting with onset dates within 14 days