

# Weekly note on COVID in Bolton – 9<sup>th</sup> September 2020

<i>Watchlist status:</i>	Intervention
--------------------------	--------------

This note brings together a summary of the information from a range of indicators of cases of COVID-19 amongst residents of Bolton. The information is based on data from official sources. It presents the picture of our understanding according to the latest available data on the date of the note's release. No single indicator gives the complete picture; counts and rates will vary from day to day and are interpreted alongside other indicators and contextual information including testing rates, positivity, our understanding of what's driving transmission locally and within neighbouring areas. The period to which the indicators apply may vary and are stated within the text.

Data on COVID-19 in Bolton is available at <https://www.boltonjsna.org.uk/coronavirus>

## Positive cases from swab testing (Pillar 1 and Pillar 2)

- Week on week rates of positive cases had been showing a downward trend, however, in the past fortnight there has been a steep rise in the number of cases since the 25<sup>th</sup> August.
- There was an average of 45.9 cases per day in the week to 4<sup>th</sup> September. Most positive cases came through community swab testing (known as Pillar 2).
- New COVID-19 cases are spread across the borough and are not limited to a single neighbourhood, community, or workplace. More than three quarters of cases in the past week have been aged 18-49. A disproportionate number of cases are from the most disadvantaged parts of the borough. Three quarters are White British ethnicity.

## 7-day rate of cases per 100,000 population

- The current rate of 128.3 for the 7 days ending 5<sup>th</sup> September.

## Test numbers and Positivity

- We are continuing to see an increase in the number of people going for testing. The proportion of tests reported as positive, known as 'positivity', is higher than last week, at 9.1% for the 7 days to the 7<sup>th</sup> September.

## Community clusters and outbreaks

Over the past week, we have commenced investigations into four clusters: two in workplaces, and two premises in the hospitality sector.

## Regional R

- The R value for the North West is 0.8-1.0 as of Friday 4<sup>th</sup> September. When there is a significant amount of variability across a region, for example due to a local outbreak, then a single average value does not accurately reflect the way infections are changing throughout the region.

## NHS activity

- Data available to us internally indicate that there has been a small increase in admissions to hospital. There has also been a small increase in calls to NHS 111 and online COVID related enquiries.

## Deaths with COVID-19 and deaths from all causes

- Sadly, there have been a total of 326 deaths with COVID-19 amongst Bolton residents (registered up to 29<sup>th</sup> August)

## Ward level data

- In the last week cases have been reported on all wards in the borough. All wards have seen an increase in cases compared to the previous week.

### Definitions:

*Pillar 1:* swab testing in Public Health England (PHE) labs and NHS hospitals for those with a clinical need, and health and care worker

*Pillar 2:* swab testing for the wider population, as set out in government guidance and delivered with Deloitte

*Outbreak:* two or more confirmed cases associated with a workplace, care home or educational setting with onset dates within 14 days

Figure 1.

Daily confirmed cases of COVID-19 for Bolton, with Pillar 1 and Pillar 2 cases inclusive

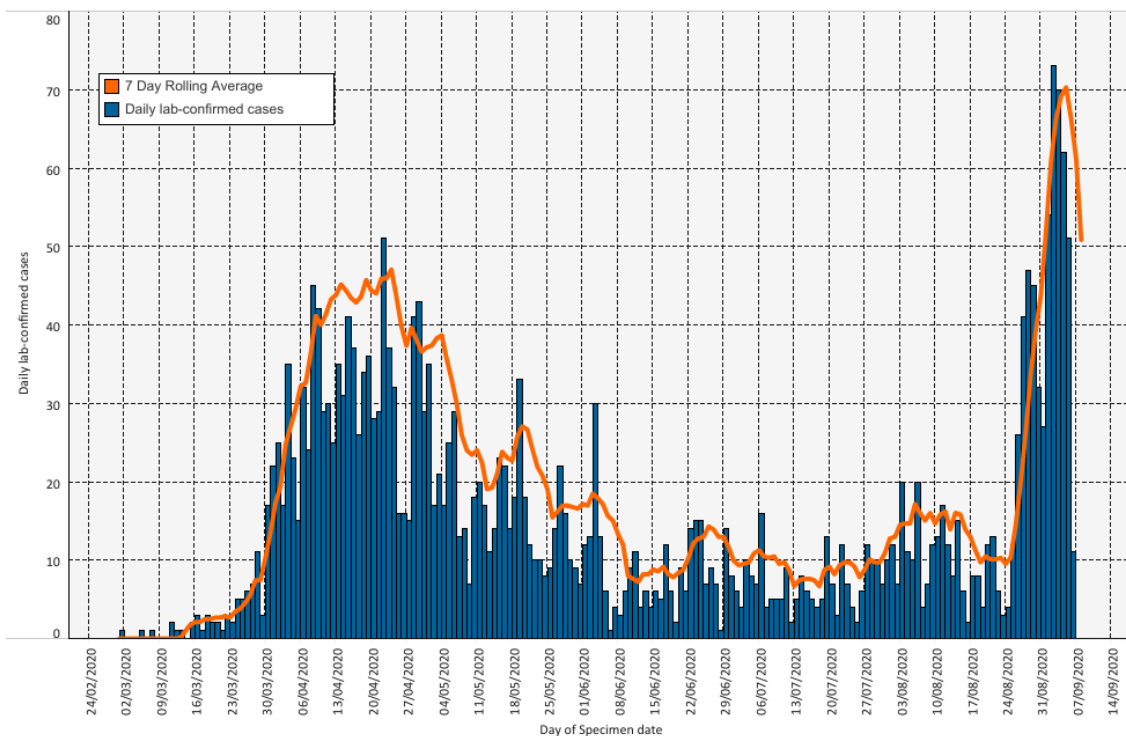
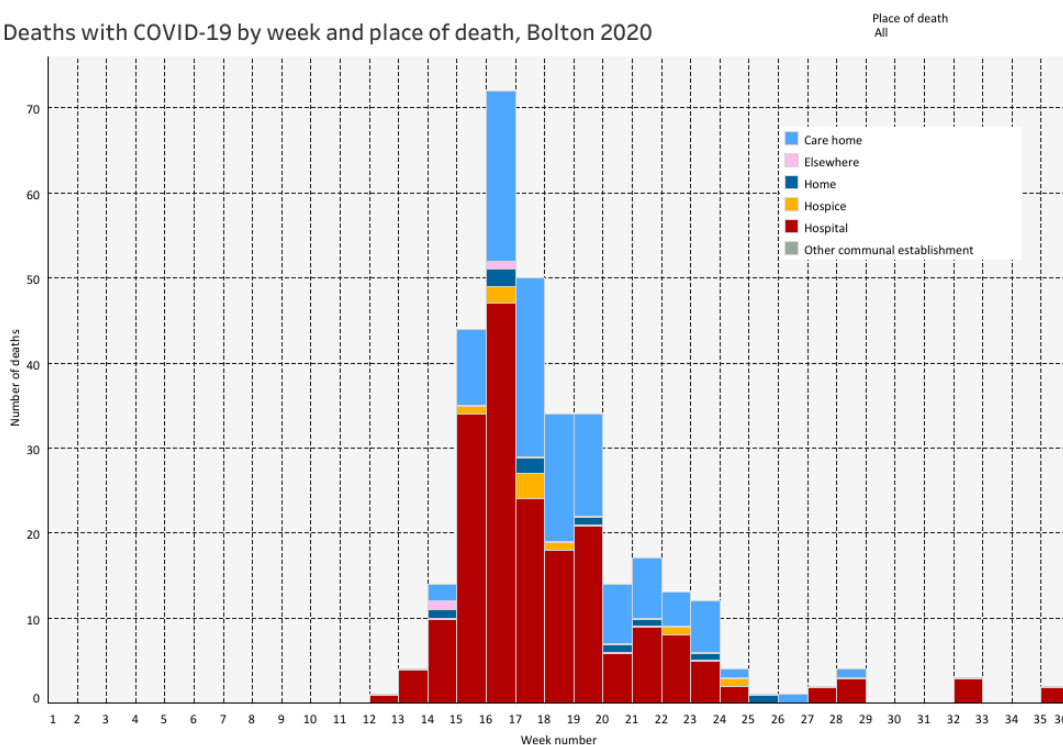


Figure 2.

Deaths with COVID-19 by week and place of death, Bolton 2020



Prepared by Lynn Donkin, Assistant Director/Consultant in Public Health with support from Bolton COVID-19 Data Cell. Queries should be sent to: [PublicHealthDirectorate@bolton.gov.uk](mailto:PublicHealthDirectorate@bolton.gov.uk)

Definitions:

*Pillar 1:* swab testing in Public Health England (PHE) labs and NHS hospitals for those with a clinical need, and health and care worker

*Pillar 2:* swab testing for the wider population, as set out in government guidance and delivered with Deloittes

*Outbreak:* two or more confirmed cases associated with a workplace, care home or educational setting with onset dates within 14 days