

Weekly note on COVID in Bolton – 2nd September 2020

<i>Watchlist status:</i>	Intervention/Enhanced Support
--------------------------	-------------------------------

This note brings together a summary of the information from a range of indicators of cases of COVID-19 amongst residents of Bolton. The information is based on data from official sources. It presents the picture of our understanding according to the latest available data on the date of the note's release. No single indicator gives the complete picture; counts and rates will vary from day to day and are interpreted alongside other indicators and contextual information including testing rates, positivity, our understanding of what's driving transmission locally and within neighbouring areas. The period to which the indicators apply may vary and are stated within the text.

Data on COVID-19 in Bolton is available at <https://www.boltonjsna.org.uk/coronavirus>

Positive cases from swab testing (Pillar 1 and Pillar 2)

- Week on week rates of positive cases had been showing a downward trend, however, in the past week there has been a steep rise in the number of cases since the 25th August.
- There was an average of 17.4 cases per day in the fortnight to 30th August, an increase of almost 10 cases per day since last week. Most positive cases came through community swab testing (known as Pillar 2).
- New COVID-19 cases are spread across the borough and are not limited to a single neighbourhood, community, or workplace. The majority of cases in the past week have been in the 18-49-year olds. A disproportionate number of cases are from the most disadvantaged parts of the borough. Two thirds are White British ethnicity.

7-day rate of cases per 100,000 population

- The current rate of 66.6 for the 7 days ending 30th August is the highest it has been since the peak of the pandemic (April).

Test numbers and Positivity

- We are seeing an increase in the number of people going for testing, following the reduction of last week. The proportion of tests reported as positive, known as 'positivity', is higher than last week, at 4.2%.

Community Clusters and outbreaks

In the most recent fortnight, we have investigated clusters/outbreaks: in a supported living facility for young people, and a care home. We are currently investigating a cluster of cases linked to a licensed premises.

Regional R

- The R value for the North West is 0.9-1.1 as of Monday 28th August. The most likely true value is somewhere towards the middle of this range.

NHS activity

- Data available to us internally indicate that admissions to hospital are low. There has been a small increase in calls to NHS 111 and online COVID related enquiries.

Deaths with COVID-19 and deaths from all causes

- Sadly, there have been a total of 324 deaths with COVID-19 occurrent amongst Bolton residents (registered up to 29th August)

Definitions:

Pillar 1: swab testing in Public Health England (PHE) labs and NHS hospitals for those with a clinical need, and health and care worker

Pillar 2: swab testing for the wider population, as set out in government guidance and delivered with Deloittes

Outbreak: two or more confirmed cases associated with a workplace, care home or educational setting with onset dates within 14 days

- Weekly figures for deaths with COVID-19 are relatively low, and there were no deaths recorded in the most recent week for which we have data. Weekly deaths from all causes for the last 3 weeks have varied between slightly above or lower than the average for the same week in recent years

Ward level data

- Cases have been seen on most parts of the borough. The highest number of cases for the most recent full week (24/08/20 – 30/08/20), were found in Brieghtmet ward, Tonge with the Haulgh, Great Lever and Bromley Cross.

Definitions:

Pillar 1: swab testing in Public Health England (PHE) labs and NHS hospitals for those with a clinical need, and health and care worker

Pillar 2: swab testing for the wider population, as set out in government guidance and delivered with Deloitte

Outbreak: two or more confirmed cases associated with a workplace, care home or educational setting with onset dates within 14 days

Figure 1.

Daily confirmed cases of COVID-19 for Bolton, with Pillar 1 and Pillar 2 cases inclusive

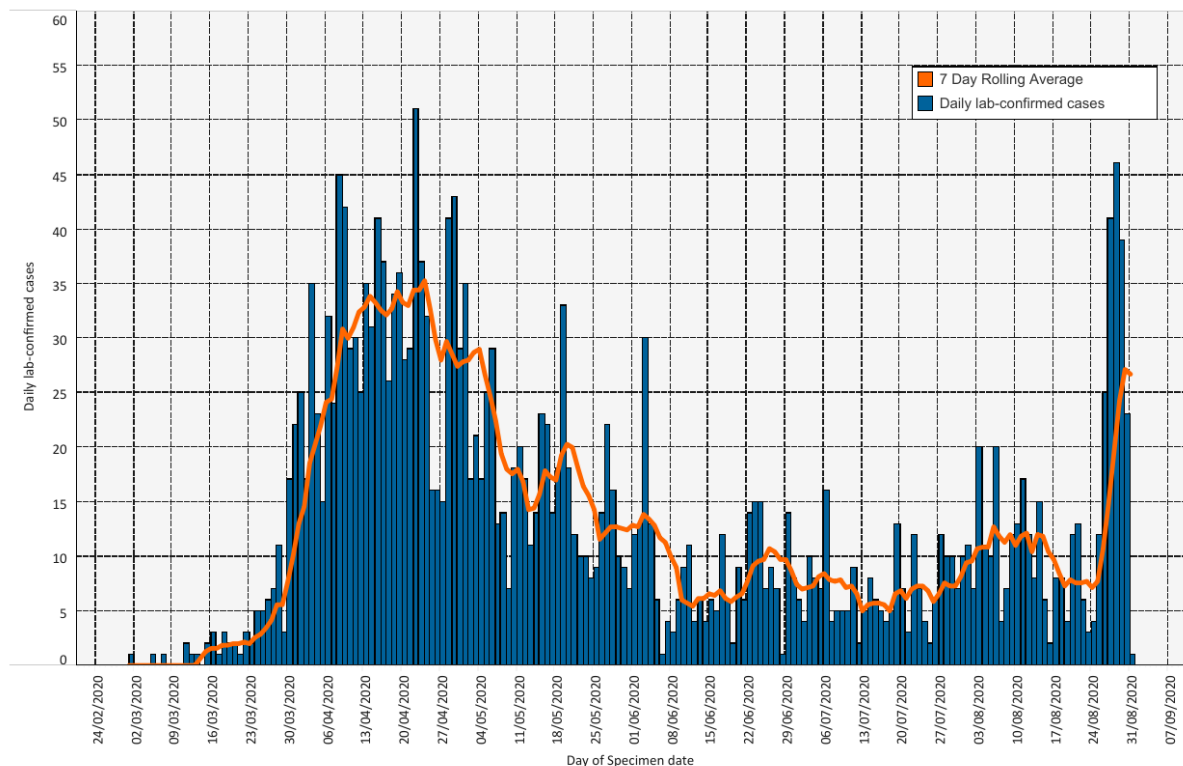
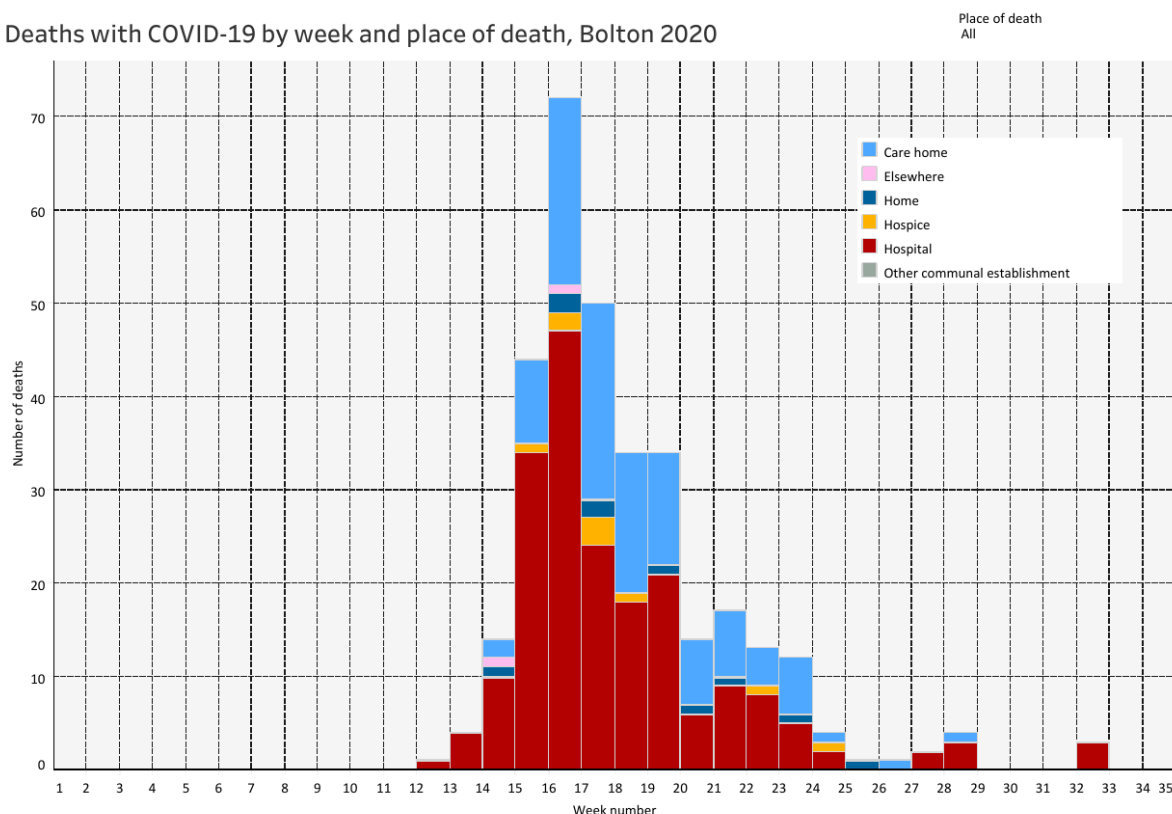


Figure 2.

Deaths with COVID-19 by week and place of death, Bolton 2020



Prepared by Chris Kirk, Public Health Analyst, Bolton Council with support from Bolton COVID-19 Data Cell. Queries should be sent to: PublicHealthDirectorate@bolton.gov.uk

Definitions:

Pillar 1: swab testing in Public Health England (PHE) labs and NHS hospitals for those with a clinical need, and health and care worker

Pillar 2: swab testing for the wider population, as set out in government guidance and delivered with Deloittes

Outbreak: two or more confirmed cases associated with a workplace, care home or educational setting with onset dates within 14 days