

# Weekly note on COVID in Bolton – 26<sup>th</sup> August 2020

<i>Watchlist status:</i>	Intervention (Greater Manchester wide)
--------------------------	--

This note brings together a summary of the information from a range of indicators of cases of COVID-19 amongst residents of Bolton. The information is based on data from official sources. It presents the picture of our understanding according to the latest available data on the date of the note's release. No single indicator gives the complete picture; counts and rates will vary from day to day and are interpreted alongside other indicators and contextual information including testing rates, positivity, our understanding of what's driving transmission locally and within neighbouring areas. The period to which the indicators apply may vary and are stated within the text.

Data on COVID-19 in Bolton is available at <https://www.boltonjsna.org.uk/coronavirus>

## Positive cases from swab testing (Pillar 1 and Pillar 2)

- Our week on week rates of positive cases had been showing encouraging decreases in recent days, but overall is broadly similar to the situation last week. There were an average of 7.6 cases per day in the fortnight to 24<sup>th</sup> August. Most positive cases have come through community swab testing (known as Pillar 2).
- We are seeing patterns that suggest transmission within the community, and within and between households. Recent cases have seen a peak among individuals aged 45-54, but otherwise a relatively even spread amongst individuals aged under 65; many cases are from the most disadvantaged parts of the borough, and around a third are of Asian/Asian British ethnicity

## 7 day rate of cases per 100,000 population

- The current rate of 18.9 for the 7 days ending 20<sup>h</sup> August is slightly lower but broadly similar to the previous week.

## Test numbers and Positivity

- We are seeing reductions in the number of people going for testing, following the increases over previous weeks. The proportion of tests reported as positive, known as 'positivity', is broadly similar to last week, at 2.6%.

## Community Clusters and outbreaks

- In the most recent fortnight, we have investigated 12 community outbreaks: 7 in residential areas, 3 in health/ care settings, 1 in a workplace, and 1 in an 'other' setting. Local teams have worked with these settings to give specialist guidance on infection prevention control, hygiene and isolations of contacts to limit further spread.

## Regional R

- The R value for the North West is 0.8-1.1 as of Friday 21<sup>st</sup> August. The most likely true value is somewhere towards the middle of this range.

## NHS activity

- Data available to us internally indicate that calls to NHS 111 and admissions to hospital are low.

## Deaths with COVID-19 and deaths from all causes

- Sadly, there have been a total of 324 deaths with COVID-19 occurrent amongst Bolton residents (registered up to 14<sup>th</sup> August)

### Definitions:

*Pillar 1:* swab testing in Public Health England (PHE) labs and NHS hospitals for those with a clinical need, and health and care worker

*Pillar 2:* swab testing for the wider population, as set out in government guidance and delivered with Deloittes

*Outbreak:* two or more confirmed cases associated with a workplace, care home or educational setting with onset dates within 14 days

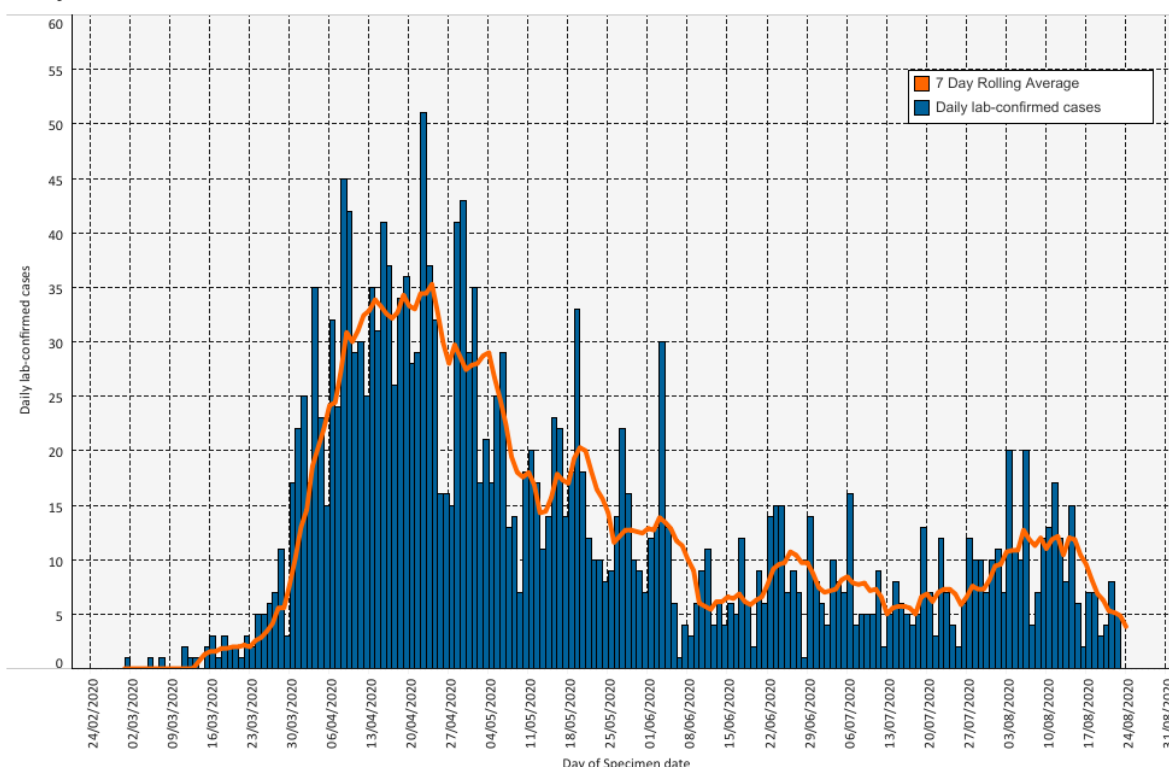
- Weekly figures for deaths with COVID-19 are relatively low, and there were no deaths recorded in the most recent week for which we have data. Weekly deaths from all causes for the last 3 weeks have varied between slightly above or lower than the average for the same week in recent years

#### Ward level data

- The highest number of cases for the most recent full week (10/8/20 – 16/8/20), were found in Halliwell and Rumworth.

Figure 1.

Daily confirmed cases of COVID-19 for Bolton, with Pillar 1 and Pillar 2 cases inclusive



#### Definitions:

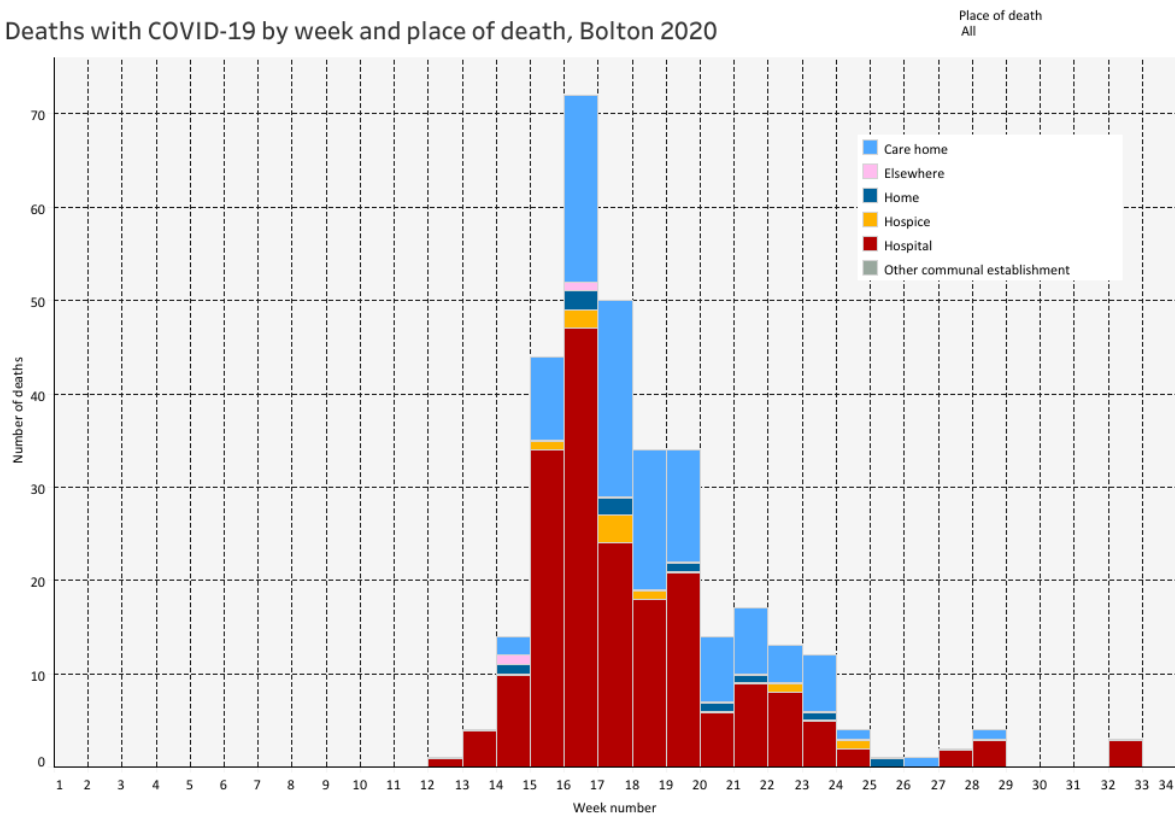
*Pillar 1:* swab testing in Public Health England (PHE) labs and NHS hospitals for those with a clinical need, and health and care worker

*Pillar 2:* swab testing for the wider population, as set out in government guidance and delivered with Deloittes

*Outbreak:* two or more confirmed cases associated with a workplace, care home or educational setting with onset dates within 14 days

Figure 2.

Deaths with COVID-19 by week and place of death, Bolton 2020



Prepared by Shan Wilkinson, Public Health Principal, Bolton Council with support from Bolton COVID-19 Data Cell. Queries should be sent to: [PublicHealthDirectorate@bolton.gov.uk](mailto:PublicHealthDirectorate@bolton.gov.uk)

Definitions:

*Pillar 1:* swab testing in Public Health England (PHE) labs and NHS hospitals for those with a clinical need, and health and care worker

*Pillar 2:* swab testing for the wider population, as set out in government guidance and delivered with Deloitte

*Outbreak:* two or more confirmed cases associated with a workplace, care home or educational setting with onset dates within 14 days