

Weekly note on COVID in Bolton – 19th August 2020

Watchlist status:	Intervention (Greater Manchester wide)
--------------------------	--

This note brings together a summary of the information from a range of indicators of cases of COVID-19 amongst residents of Bolton. The information is based on data from official sources. It presents the picture of our understanding according to the latest available data on the date of the note's release. No single indicator gives the complete picture; counts and rates will vary from day to day and are interpreted alongside other indicators and contextual information including testing rates, positivity, our understanding of what's driving transmission locally and within neighbouring areas. The period to which the indicators apply may vary and are stated within the text.

Data on COVID-19 in Bolton is available at <https://www.boltonjsna.org.uk/coronavirus>

Positive cases from swab testing (Pillar 1 and Pillar 2)

- Rates of positive cases have remained largely static in Bolton over the last week. There were an average of 9.0 cases per day in the fortnight to 17th August. Most positive cases have come through community swab testing (known as Pillar 2).
- We are seeing patterns that suggest transmission within the community, and within and between households. Recent cases have become more evenly distributed in terms of age with a fairly evenly spread amongst individuals aged under 65; many cases are from the most disadvantaged parts of the borough, and around a third are of Asian/Asian British ethnicity

7 day rate of cases per 100,000 population

- The current rate of 25.6 for the 7 days ending 13th August is slightly lower but broadly similar to the previous week.

Test numbers and Positivity

- We are seeing reductions in the number of people going for testing, following the increases over previous weeks. The proportion of tests reported as positive, known as 'positivity', is broadly similar to last week.

Community outbreaks

- In the most recent fortnight, we have managed 8 community outbreaks, 5 in health/ care settings, 2 in workplaces, and 1 in an 'other' setting. Local teams have worked with these settings to give specialist guidance on infection prevention control, hygiene and isolations of contacts to limit further spread.

Regional R

- The R value for the North West is 0.8-1.1 as of Friday 14th August. The most likely true value is somewhere towards the middle of this range.

NHS activity

- Data available to us internally indicate that calls to NHS 111 and admissions to hospital are low.

Deaths with COVID-19 and deaths from all causes

- Sadly, there have been a total of 324 deaths with COVID-19 occurrent amongst Bolton residents (registered up to 7th August)
- Weekly figures for deaths with COVID-19 are relatively low, however sadly there were 3 deaths recorded in the most recent week for which we have data. Weekly deaths from all

Definitions:

Pillar 1: swab testing in Public Health England (PHE) labs and NHS hospitals for those with a clinical need, and health and care worker

Pillar 2: swab testing for the wider population, as set out in government guidance and delivered with Deloittes

Outbreak: two or more confirmed cases associated with a workplace, care home or educational setting with onset dates within 14 days

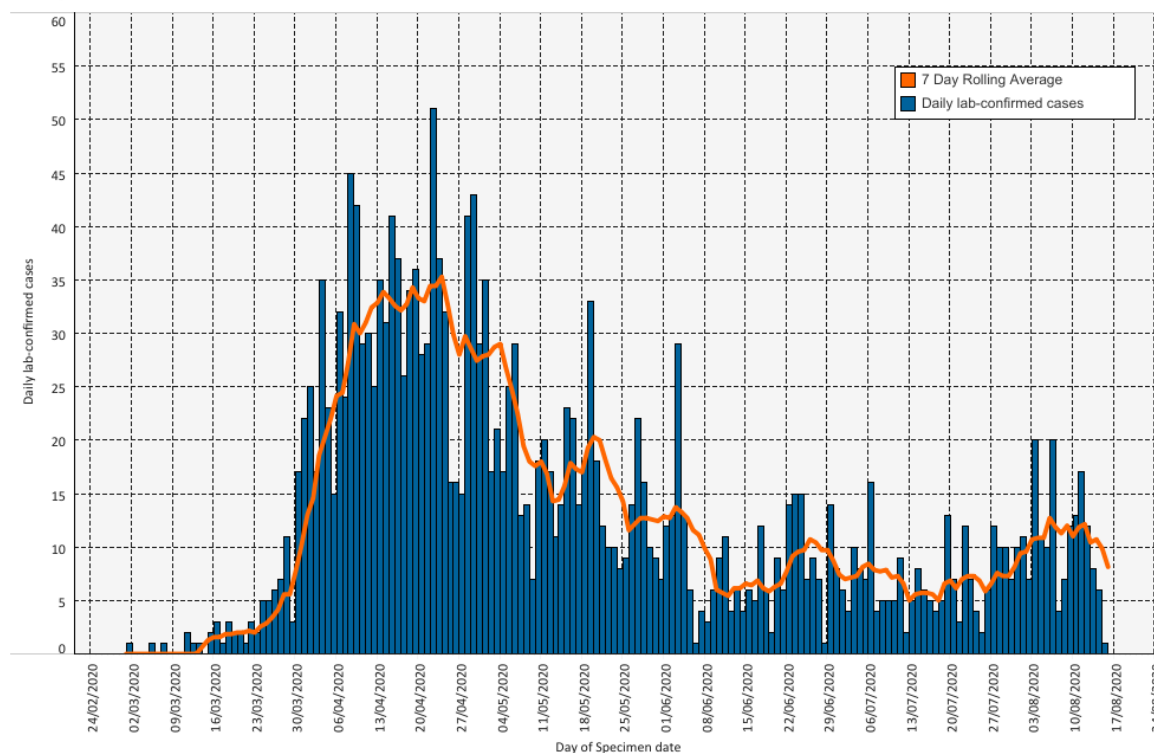
causes for the last 3 weeks have varied between slightly above or lower than the average for the same week in recent years

Ward level data

- The highest number of cases for the most recent full week (3/8/20 – 9/8/20), were found in Rumworth and Great Lever.

Figure 1.

Daily confirmed cases of COVID-19 for Bolton, with Pillar 1 and Pillar 2 cases inclusive



Definitions:

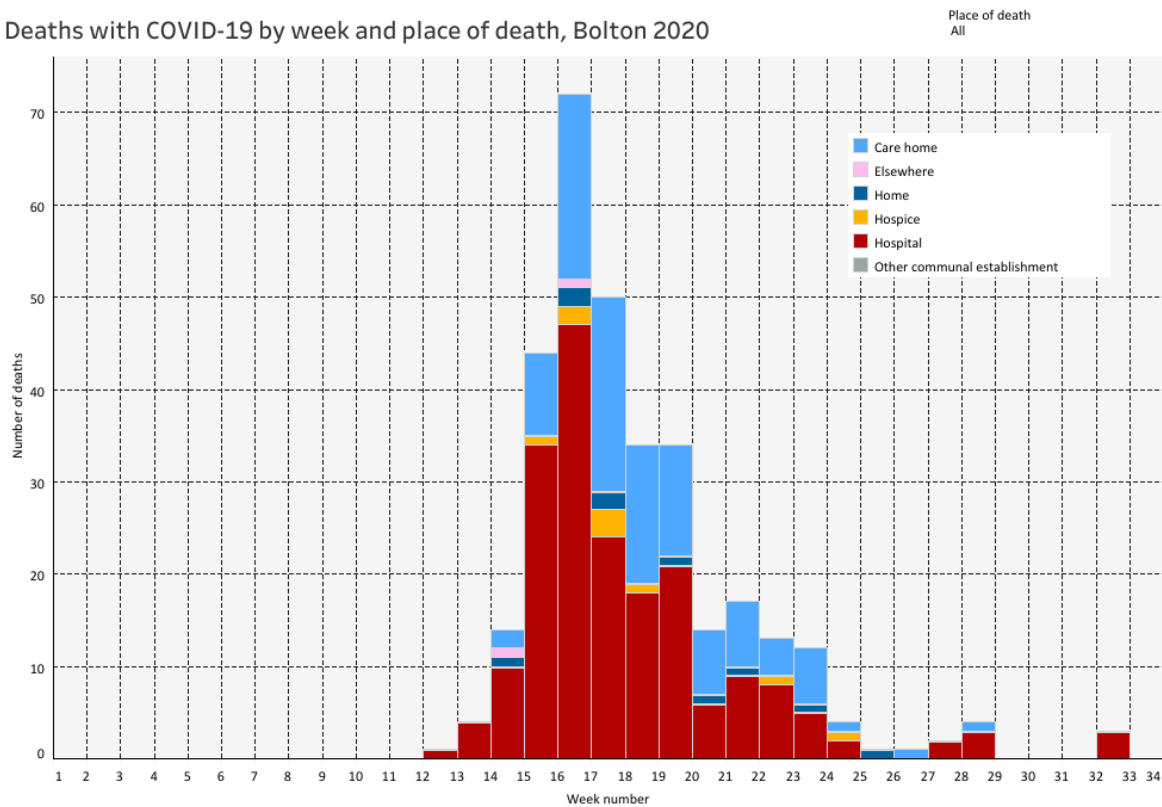
Pillar 1: swab testing in Public Health England (PHE) labs and NHS hospitals for those with a clinical need, and health and care worker

Pillar 2: swab testing for the wider population, as set out in government guidance and delivered with Deloitte

Outbreak: two or more confirmed cases associated with a workplace, care home or educational setting with onset dates within 14 days

Figure 2.

Deaths with COVID-19 by week and place of death, Bolton 2020



Prepared by Shan Wilkinson, Public Health Principal, Bolton Council with support from Bolton COVID-19 Data Cell. Queries should be sent to: PublicHealthDirectorate@bolton.gov.uk

Definitions:

Pillar 1: swab testing in Public Health England (PHE) labs and NHS hospitals for those with a clinical need, and health and care worker

Pillar 2: swab testing for the wider population, as set out in government guidance and delivered with Deloittes

Outbreak: two or more confirmed cases associated with a workplace, care home or educational setting with onset dates within 14 days