

Public Health COVID-19 data update

5th August 2021



For the 7 days up to and including 30 July :-

	Bolton	North West	England
Case rate all ages 7 day rate per 100k	212.5 (-45% on previous 7 days)	299.0 (-32%)	288.1 (-28%)
Case rate among those aged 60+ 7 day rate per 100k	109.1 (-26% on previous 7 days)	100.9 (-28%)	87.2 (-26%)
Case rate among those aged 0-59 7 day rate per 100k	242.7 (-47% on previous 7 days)	363.1 (-32%)	351.3 (-28%)
Testing Rate 7 day rate per 100k	417.6 (down on previous 7 days)	495.5 ▼	534.7 ▼
Positivity	7.7% (down on previous 7 days)	9.0% ▼	8.1% ▼



Current alert level in Bolton: NATIONAL RESTRICTIONS

Estimated R number for the North West:

1.0-1.2 with a daily infection growth rate of 0% to 3% as of 30th July 2021

People tested positive in Bolton

Latest data provided on 5th August 2021, for the 7 day period to 30th July 2021

Average number per day (last 7 days): 87

Rate per 100k, all ages: **212.5** (↓ on previous 7 days)

Rate per 100k, age 60+: **109.1** (↓ on previous 7 days)

Total to date: 38,435

Deaths with COVID19

Latest data provided on 4th August 2021, for the 7 day period to 3rd August 2021

Daily Royal Bolton Hospital deaths: **0**

Hospital deaths latest 7 days: **5**

www.england.nhs.uk

Latest data provided on 3rd August 2021, for deaths registered up to 23rd July 2021

Weekly: 3

Total to date: 823

<https://coronavirus.data.gov.uk/>

Healthcare

Patients admitted in Bolton

Latest data provided on 2nd August 2021, reported up to 27th July 2021

People in hospital: **48** (↓)

People on ventilation: **3** (↓)

Testing

Tests carried out in Bolton

Latest data provided on 5th August 2021, for the 7 day period to 30th July 2021

Number PCR tests last 7 days: 8,541

PCR Positivity: 7.7% (↓)

Vaccinations

Vaccinations administered Bolton CCG

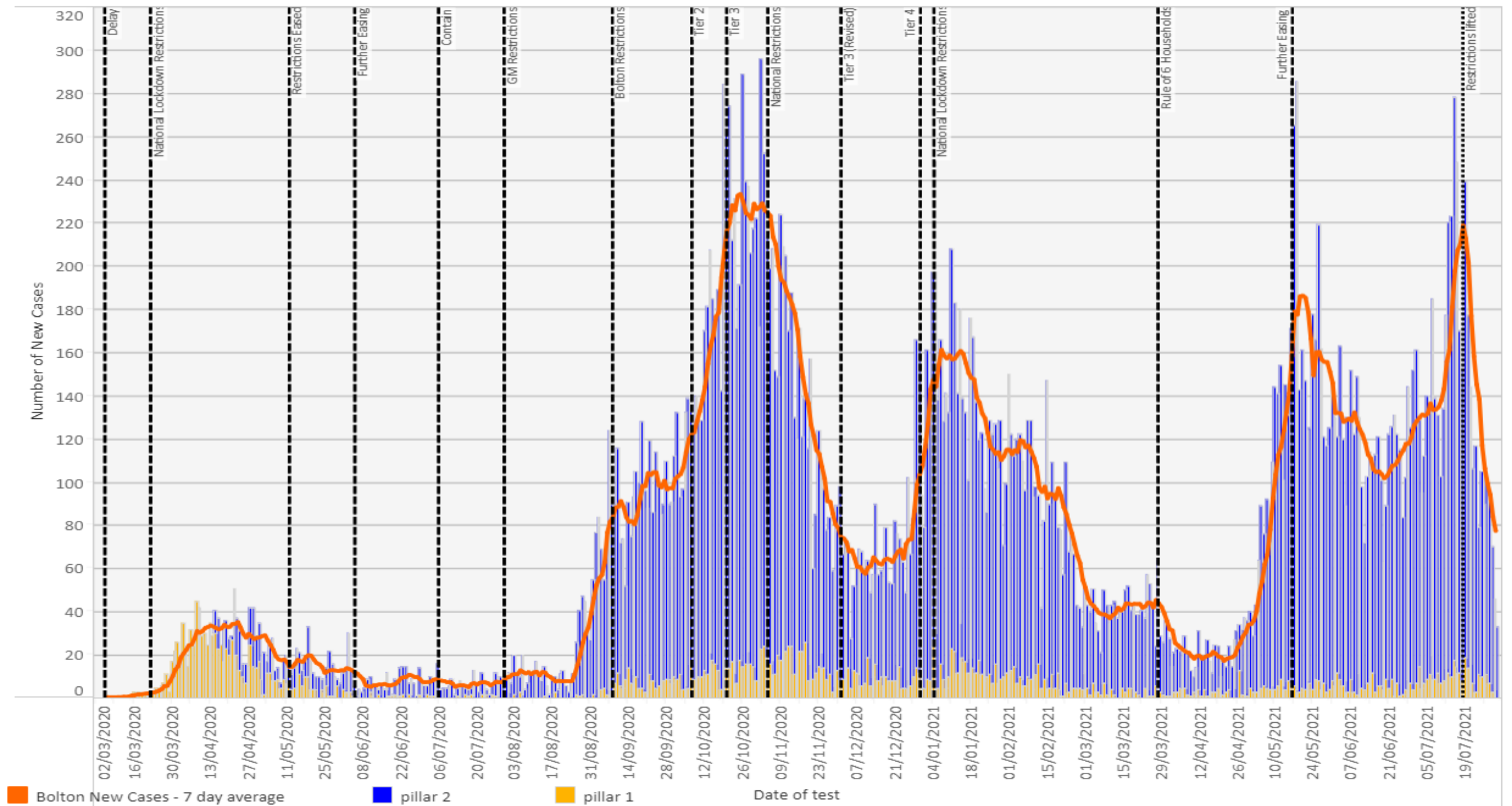
Latest data announced on 29th July 2021, for the period 8th December 2020 to 25th July 2021

30 and over:	1 st dose: 83.1%	2 nd dose: 72.5%
--------------	-----------------------------	-----------------------------

40 and over:	1 st dose: 88.3%	2 nd dose: 81.6%
--------------	-----------------------------	-----------------------------

60 and over:	1 st dose: 93.9%	2 nd dose: 91.4%
--------------	-----------------------------	-----------------------------

Bolton new COVID-19 cases timeline, by testing pillar



Bolton cases by age - heatmap

Number of new weekly COVID-19 cases by age for Bolton

Age Bracket	30/05/2021 - 05/06/2021	06/06/2021 - 12/06/2021	13/06/2021 - 19/06/2021	20/06/2021 - 26/06/2021	27/06/2021 - 03/07/2021	04/07/2021 - 10/07/2021	11/07/2021 - 17/07/2021	18/07/2021 - 24/07/2021
0-15	187	171	175	228	255	212	263	188
16-24	171	194	167	185	154	169	345	180
25-34	192	180	145	111	180	233	357	254
35-44	153	129	98	112	133	145	188	154
45-54	113	102	69	72	112	79	133	107
55-64	53	49	40	45	43	59	98	78
65-74	15	15	17	23	20	24	46	32
75-84	8	8	10	5	8	15	14	19
85+		5	4	7		6	6	3

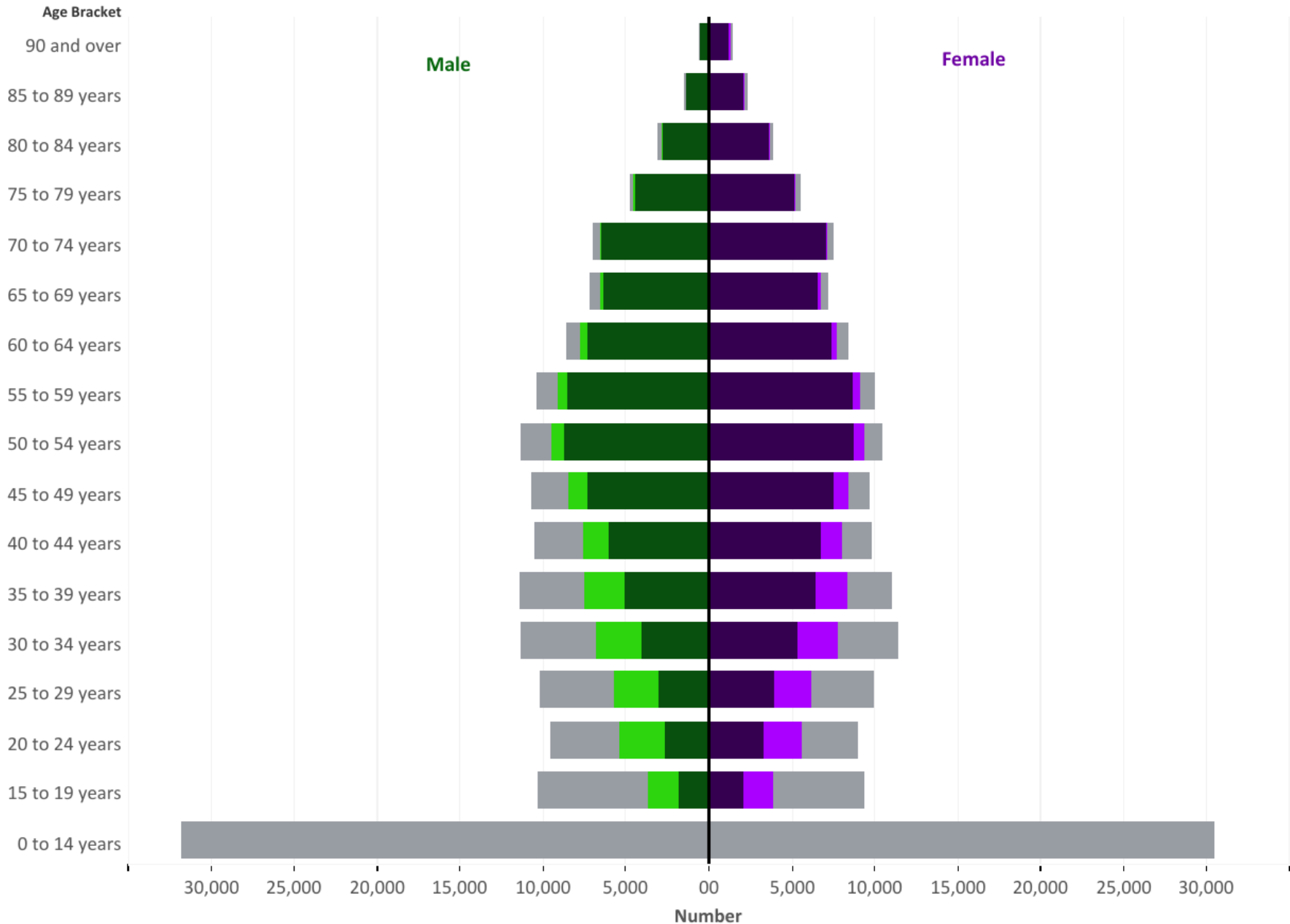


Bolton cases by ward

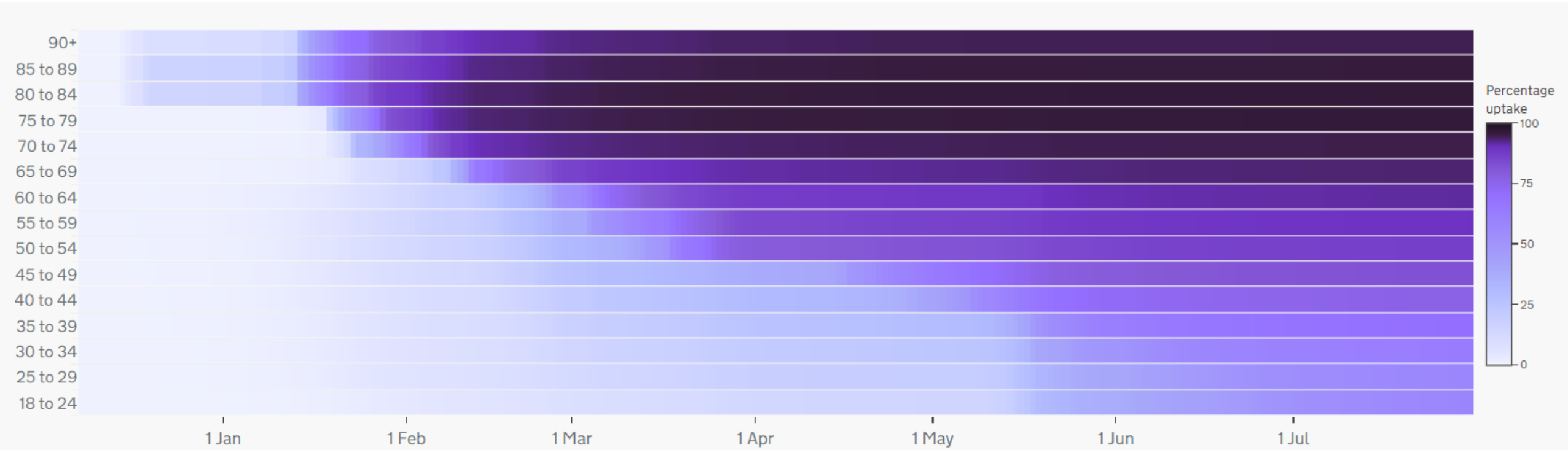
	Prior week (12/07/21-18/07/21)		Most recent week (19/07/21-25/07/21)		Change in rates between the two weeks	
Ward name	Cases	Rate	Cases	Rate	Absolute Difference	Relative
Astley Bridge	69	491	40	284	-207	Decrease
Bradshaw	83	722	51	444	-278	Decrease
Breightmet	81	578	57	407	-171	Decrease
Bromley Cross	71	520	59	432	-88	=
Crompton	63	383	46	280	-103	=
Farnworth	107	652	56	341	-311	Decrease
Great Lever	52	327	37	233	-94	=
Halliwell	60	407	57	386	-21	=
Harper Green	75	501	44	294	-207	Decrease
Heaton and Lostock	46	325	34	240	-85	=
Horwich and Blackrod	77	588	57	435	-153	Decrease
Horwich North East	70	577	43	354	-223	Decrease
Hulton	58	398	43	295	-103	=
Kearsley	95	649	58	396	-253	Decrease
Little Lever and Darcy Lever	49	390	32	255	-135	Decrease
Rumworth	53	306	21	121	-185	Decrease
Smithills	70	488	48	335	-153	Decrease
Tonge with the Haulgh	80	572	55	393	-179	Decrease
Westhoughton North and Chew Moor	96	686	70	501	-185	Decrease
Westhoughton South	110	854	57	442	-412	Decrease

Vaccine delivery in Bolton by age and sex

The number of people who are unvaccinated, men with **one** or **two** doses and women with **one** or **two** doses



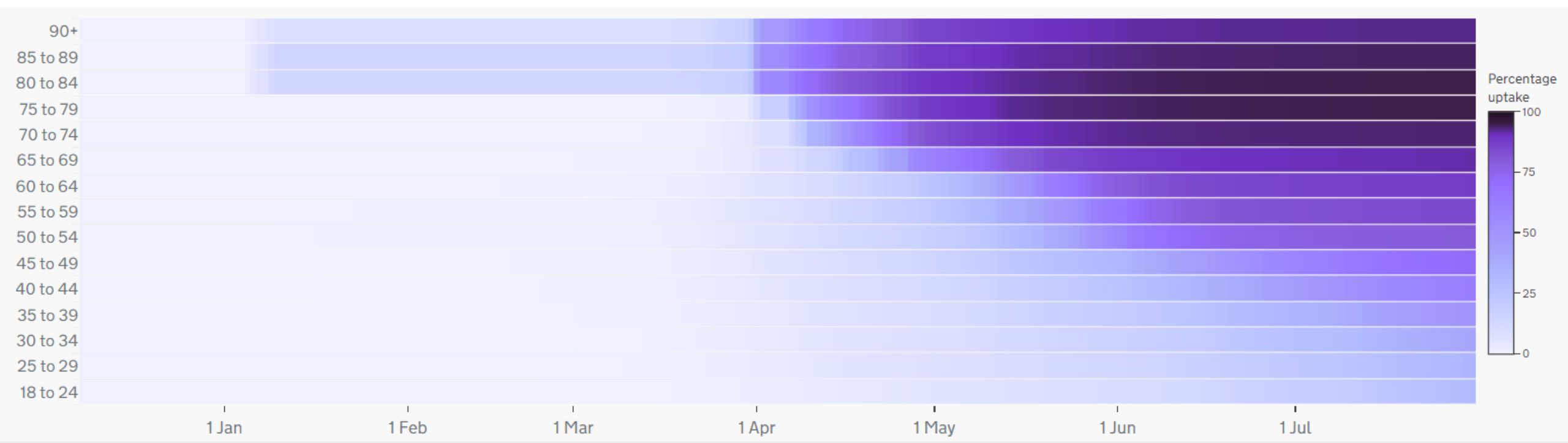
Bolton Vaccinations by age 1st Dose



- Total percentage of people by age group who have received a COVID-19 vaccination, shown by vaccination date
- Daily figures include all vaccines that were given up to and including the date shown
- Over 95% of Bolton residents aged 80+ have received the 1st dose of the vaccination
- Uptake for 30+ residents has increased significantly over the last month for the 1st dose

Bolton Vaccinations by age

2nd Dose

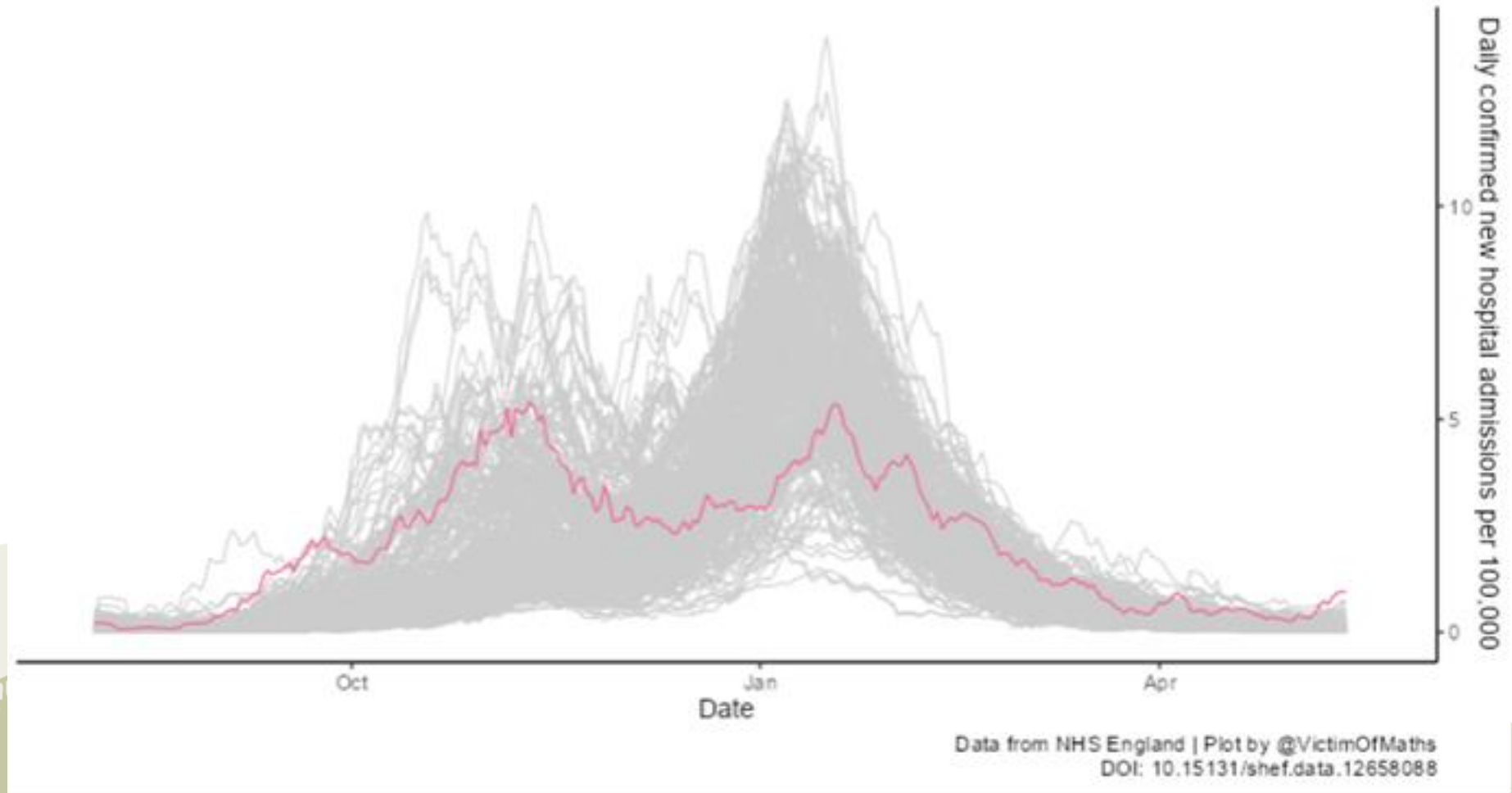


- Total percentage of people by age group who have received a COVID-19 vaccination, shown by vaccination date
- Daily figures include all vaccines that were given up to and including the date shown
- More than a third of all Bolton residents aged 30+ have now received the 2nd dose of the vaccination
- The proportion of residents to receive the 2nd dose aged 60 and over has increased to 91.2%

COVID-19 cases in hospitals in Bolton vs. the rest of England

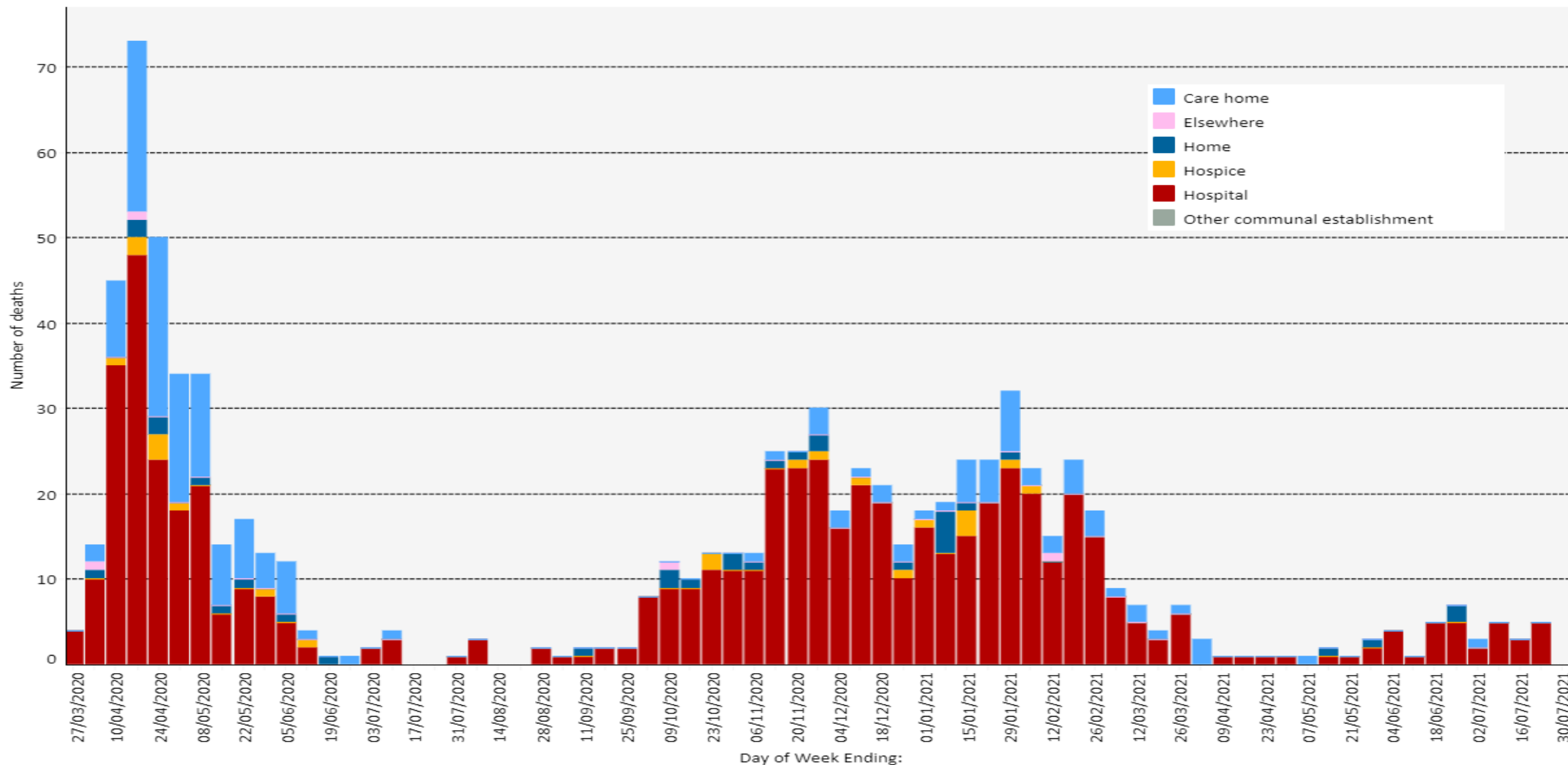
Rolling 7-day average of confirmed new COVID-19 admissions per 100,000 inhabitants in Bolton compared to other Local Authorities in England. Data is published at NHS Trust level, so these figures are apportioned between Local Authorities using data on the proportion of admissions to each trust originating from each LA in 2016-18. A small number of admissions from mental health specialist trusts are excluded from these plots. Admissions data is published weekly, so may be missing for more recent days.

Rise in hospital admissions is apparent but not currently as marked as the rise in case rates



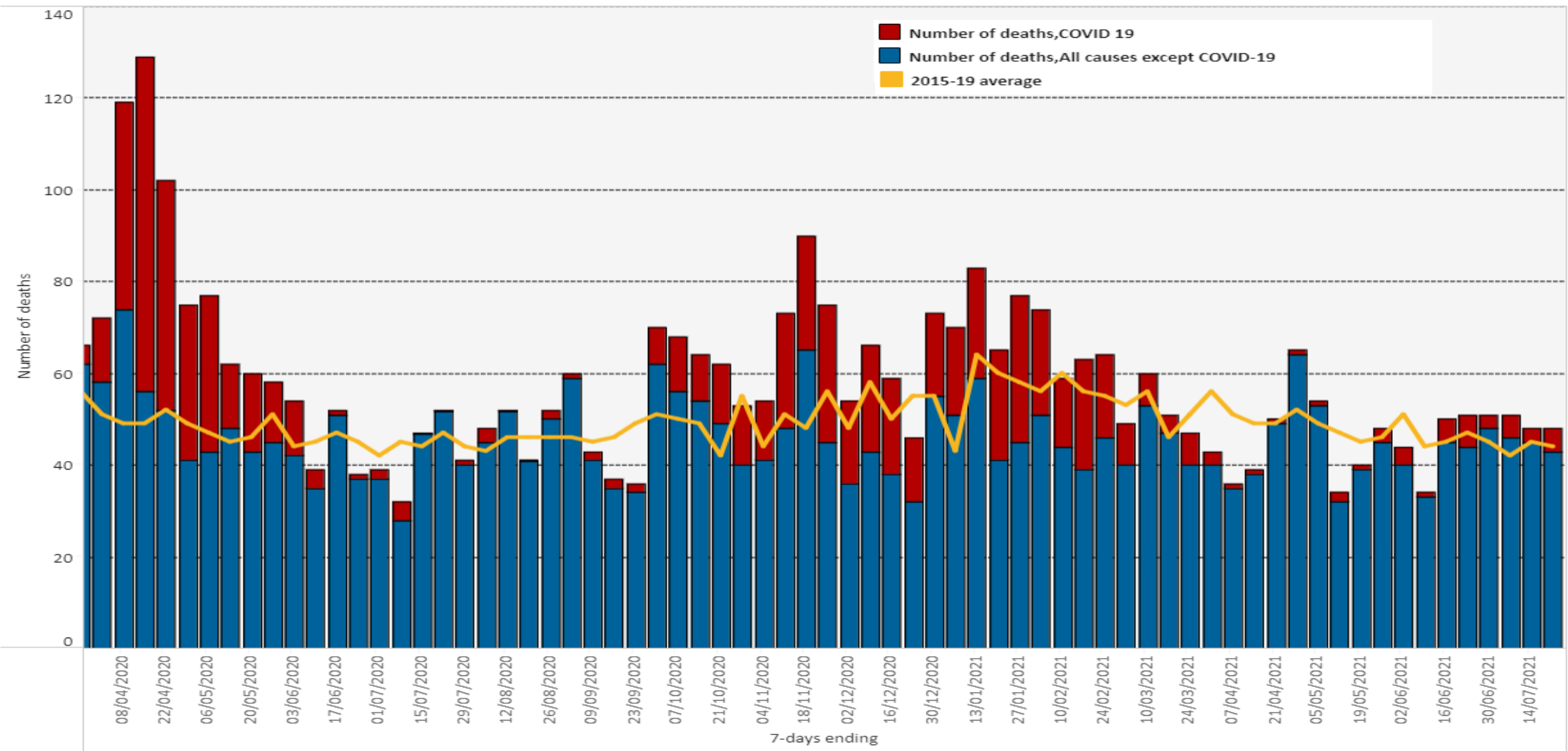
Deaths with COVID-19 by week and place of death, Bolton 2020

Place of death
(All) ▼



- Total number of deaths to Bolton residents involving COVID-19 occurring up to 23rd July 2021 = **832**
- Includes all deaths occurring elsewhere, e.g. care homes, hospice, at home
- Over the last month, there were **16** COVID-19 deaths in total occurring mainly in hospital and 1 in a care home
- For the most current week, **5** deaths occurred in hospital registered for the 7 days up to 31st July 2021

Deaths by week of occurrence for Bolton



- From October to the end of January, the number of deaths to Bolton residents was consistently above the average for the last 5 years
- During February, Bolton has seen significant decreases in all deaths, with deaths from COVID-19 continuing to reduce into April
- Since the end of March, weekly numbers for all deaths and all causes except COVID in Bolton, were mainly below the average
- Bolton has seen an increase in COVID-19 deaths in over the last month

The SAVI is a measure of COVID-19 vulnerability for each MSOA in England

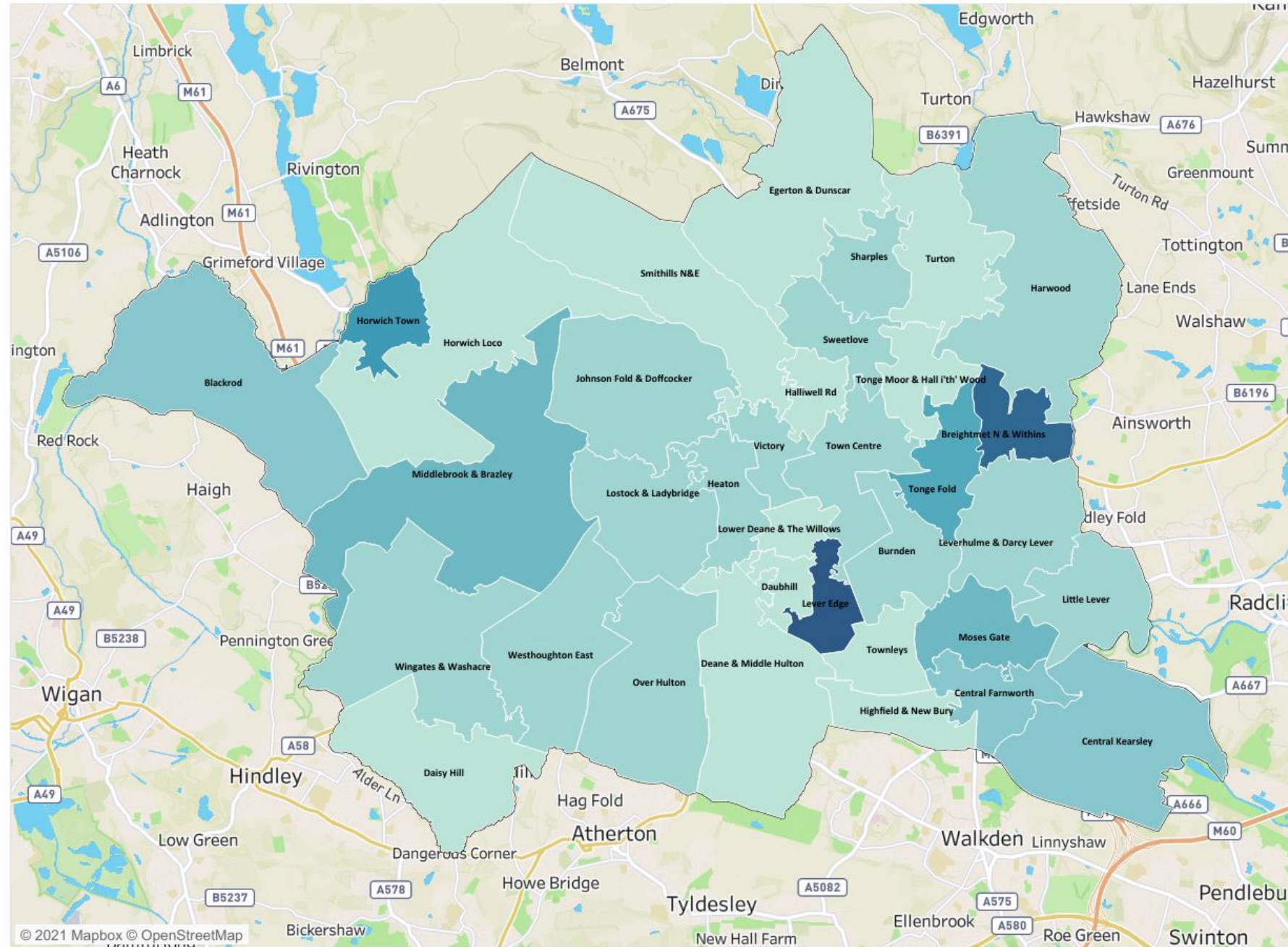
It investigates the association between BAME, Care Homes, overcrowded households and admissions for long-term health conditions

The areas with the highest increase in risk in Bolton are Brightmet N & Within and Lever Edge

Small Area Vulnerability Index

Measuring the increase in risk across Bolton by MSOA

INCREASE IN RISK
1.113 2.950



Find out more at:

www.boltonjsna.org.uk/coronavirus

