

Public Health COVID-19 data update

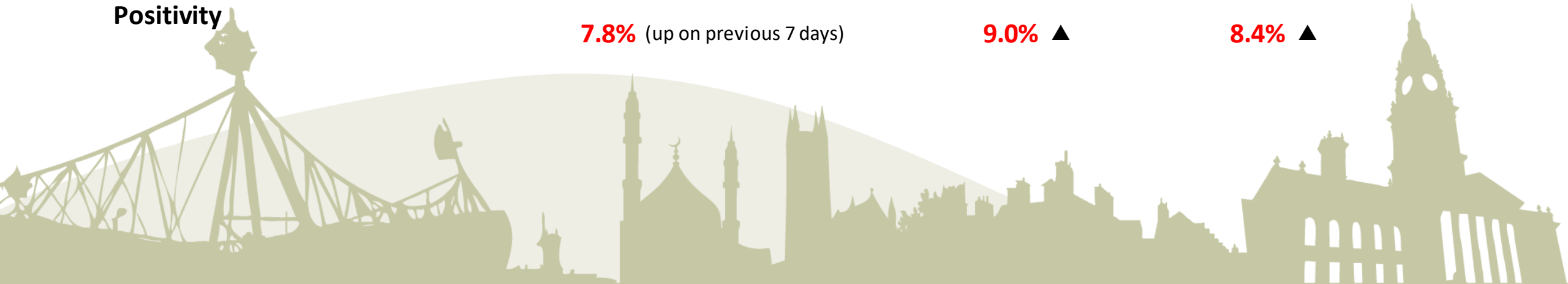
16th August 2021



Latest Coronavirus Case and Testing Rates

For the 7 days up to and including 10 August :-

	Bolton	North West	England
Case rate all ages 7 day rate per 100k	214.7 (+18% on previous 7 days)	301.4 (+6%)	306.1 (+8%)
Case rate among those aged 60+ 7 day rate per 100k	100.5 (-3% on previous 7 days)	126.0 (+25%)	109.4 (+28%)
Case rate among those aged 0-59 7 day rate per 100k	248.4 (+13% on previous 7 days)	358.7 (+5%)	368.7 (+5%)
Testing Rate 7 day rate per 100k	413.8 (up on previous 7 days)	495.0 ▲	533.4 ▲
Positivity	7.8% (up on previous 7 days)	9.0% ▲	8.4% ▲



Current alert level in Bolton: NATIONAL RESTRICTIONS

Estimated R number for the North West:

0.8-1.0 with a daily infection growth rate of -4% to 0% as of 13th August 2021

People tested positive in Bolton

Latest data provided on 15th August 2021, for the 7 day period to 10th August 2021

Average number per day (last 7 days): 88

Rate per 100k, all ages: **214.7** (↑ on previous 7 days)

Rate per 100k, age 60+: **100.5** (↓ on previous 7 days)

Total to date: 39,438

Deaths with COVID19

Latest data provided on 10th August 2021, for the 7 day period to 9th August 2021

Daily Royal Bolton Hospital deaths: **0**

Hospital deaths latest 7 days: **3**

www.england.nhs.uk

Latest data provided on 10th August 2021, for deaths registered up to 30th July 2021

Weekly: 5

Total to date: **828**

<https://coronavirus.data.gov.uk/>

Healthcare

Patients admitted in Bolton

Latest data provided on 15th August 2021, reported up to 9th August

People in hospital: **47** (↑)

People on ventilation: **5** (→)

Testing

Tests carried out in Bolton

Latest data provided on 10th August 2021, for the 7 day period to 4th August 2021

Number PCR tests last 7 days: 8,374

PCR Positivity: 7.5% (↑)

Vaccinations

Vaccinations administered Bolton CCG

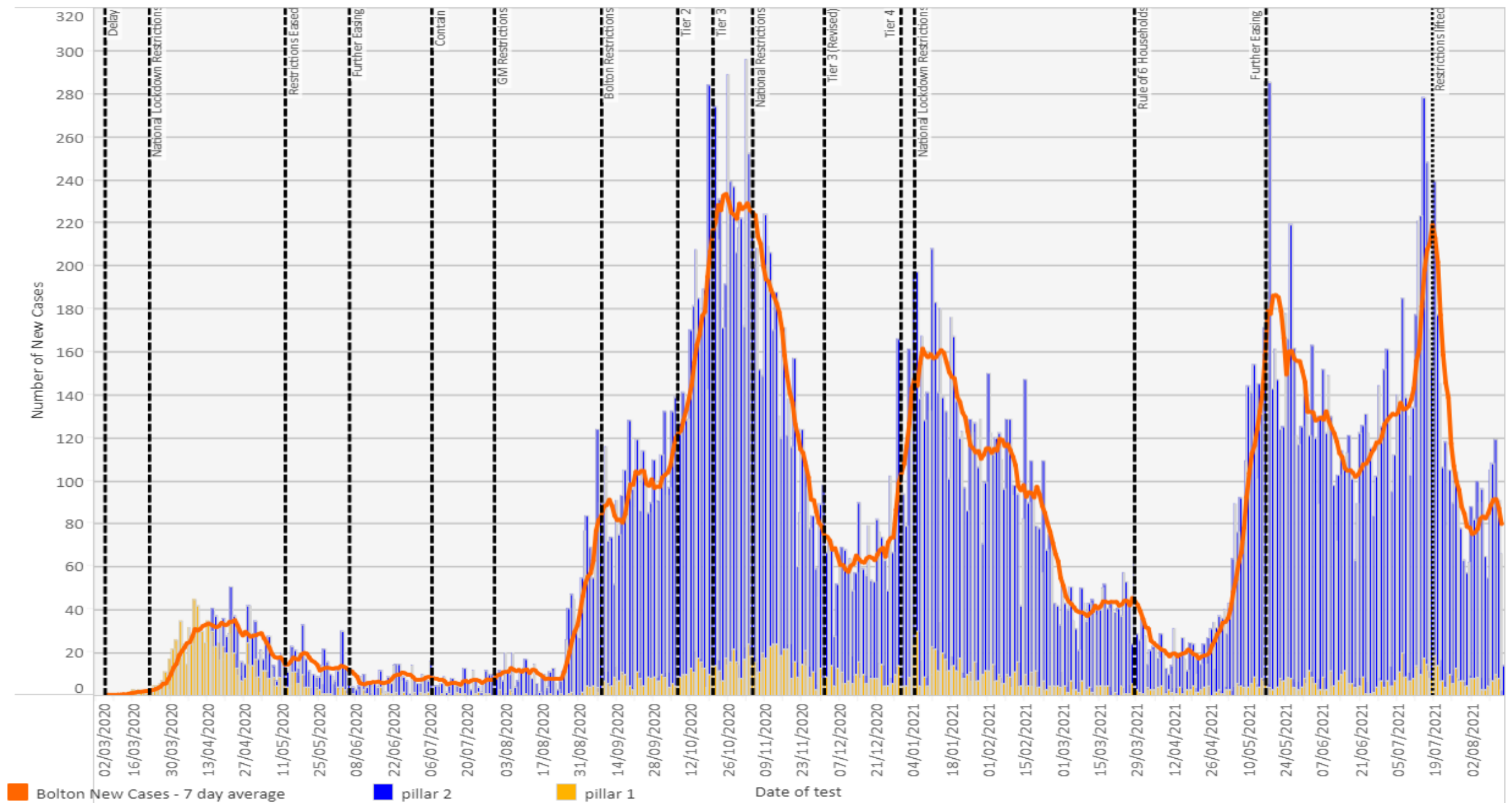
Latest data announced on 12th August 2021, for the period 8th December 2020 to 1st August 2021

30 and over:	1 st dose: 92.7%	2 nd dose: 83.7%
--------------	-----------------------------	-----------------------------

40 and over:	1 st dose: 95.9%	2 nd dose: 90.2%
--------------	-----------------------------	-----------------------------

60 and over:	1 st dose: 98.3%	2 nd dose: 96.0%
--------------	-----------------------------	-----------------------------

Bolton new COVID-19 cases timeline, by testing pillar



Bolton cases by age - heatmap

Number of new weekly COVID-19 cases by age for Bolton

Age Bracket	13/06/2021 - 19/06/2021	20/06/2021 - 26/06/2021	27/06/2021 - 03/07/2021	04/07/2021 - 10/07/2021	11/07/2021 - 17/07/2021	18/07/2021 - 24/07/2021	25/07/2021 - 31/07/2021	01/08/2021 - 07/08/2021
0-15	175	228	255	212	263	189	126	82
16-24	167	185	154	169	345	180	107	105
25-34	145	111	180	232	358	254	111	136
35-44	98	112	133	145	188	154	89	94
45-54	69	72	112	79	133	107	56	68
55-64	40	45	43	59	98	78	51	59
65-74	17	23	19	24	46	32	32	29
75-84	10	5	8	15	14	20	18	9
85+	4	7		6	6	3		

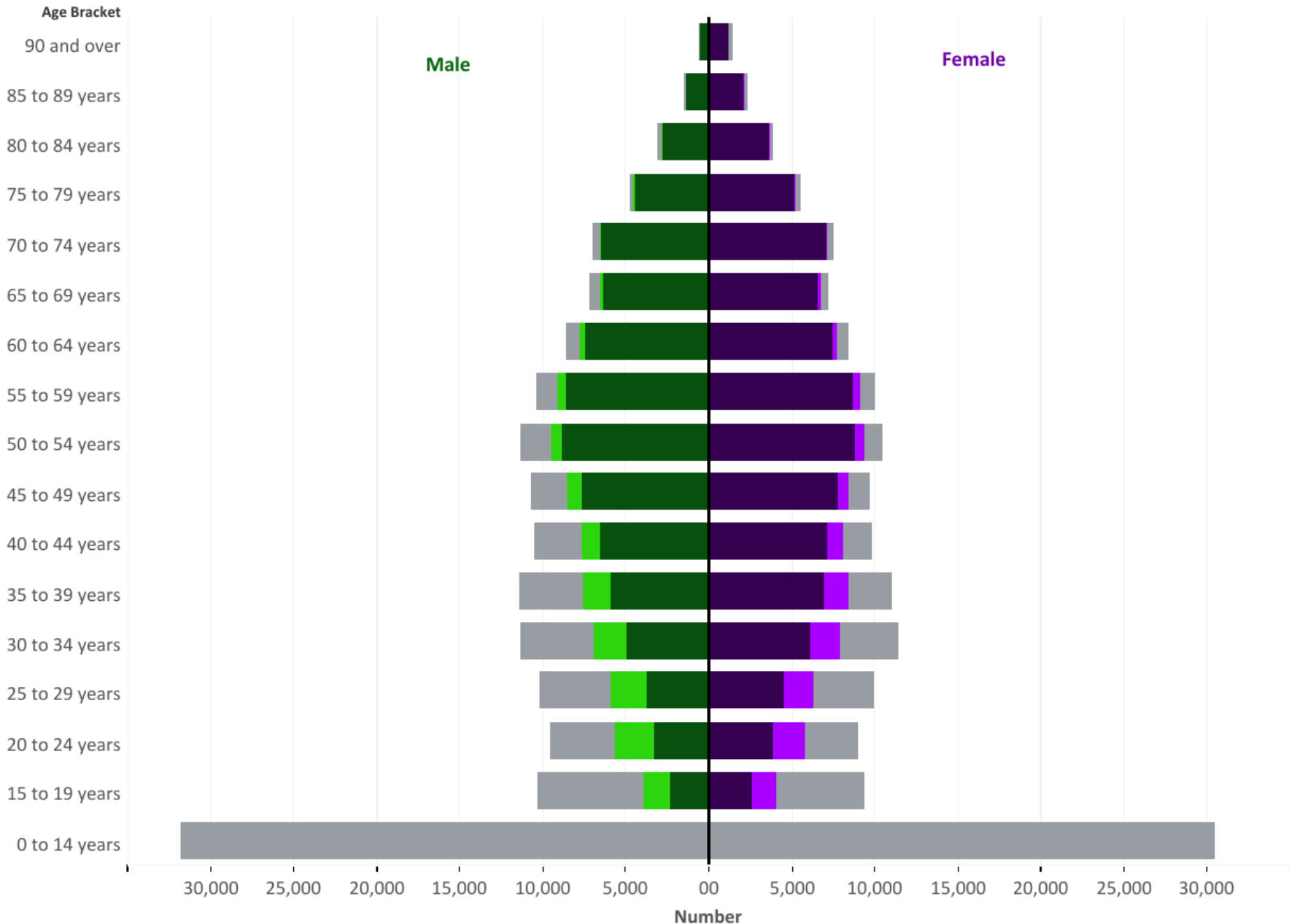


Bolton cases by ward

	Prior week (28/07/21-3/8/21)		Most recent week (4/08/21-10/08/21)		Change in rates between the two weeks	
Ward name	Cases	Rate	Cases	Rate	Absolute Difference	Relative
Astley Bridge	37	263.4	27	192.2	-27	=
Bradshaw	19	166.7	21	184.3	10	=
Brightmet	29	205.1	35	247.5	20	=
Bromley Cross	25	184.4	45	331.9	79	Increase
Crompton	24	143.4	41	245.0	70	Increase
Farnworth	41	247.0	35	210.9	-14	=
Great Lever	22	135.3	18	110.7	-18	=
Halliwel	15	99.6	31	205.9	106	Increase
Harper Green	18	118.5	35	230.3	94	Increase
Heaton and Lostock	19	133.1	24	168.1	26	=
Horwich and Blackrod	38	286.5	28	211.1	-26	=
Horwich North East	24	196.8	35	286.9	45	=
Hulton	24	163.8	33	225.2	37	=
Kearsley	24	165.3	24	165.3	0	=
Little Lever and Darcy Lever	32	253.3	23	182.0	-28	=
Rumworth	16	91.2	28	159.6	74	=
Smithills	29	200.2	30	207.1	3	=
Tonge with the Haulgh	30	211.6	37	261.0	23	=
Westhoughton North and Chew Moor	28	200.5	34	243.5	21	=
Westhoughton South	30	233.6	35	272.6	16	=

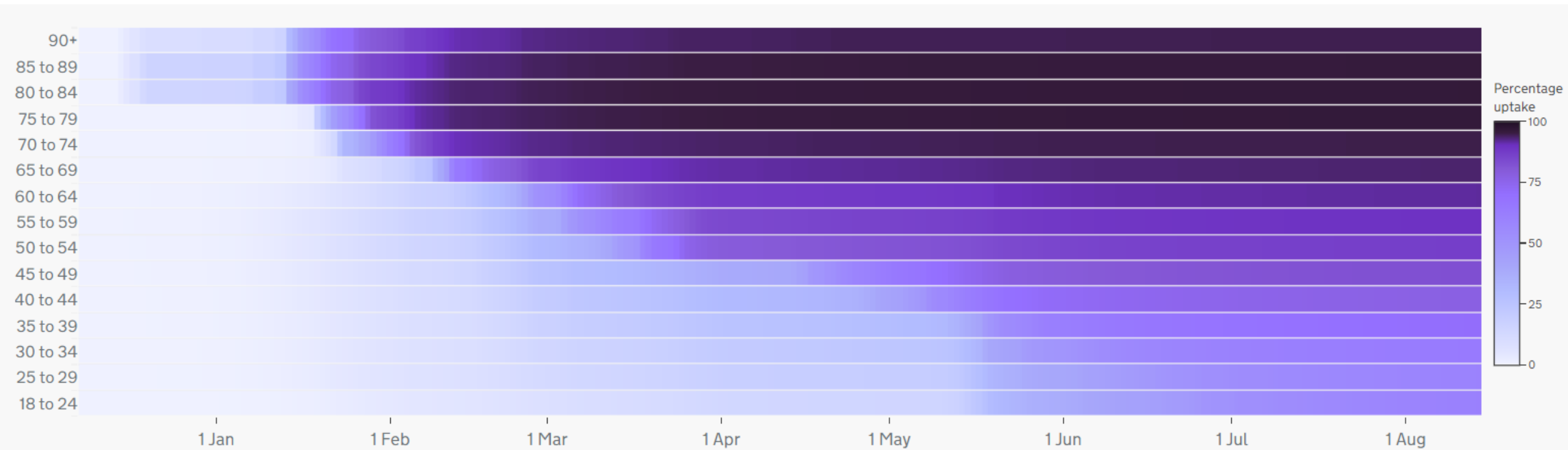
Vaccine delivery in Bolton by age and sex

The number of people who are unvaccinated, men with **one** or **two** doses and women with **one** or **two** doses



Bolton Vaccinations by age

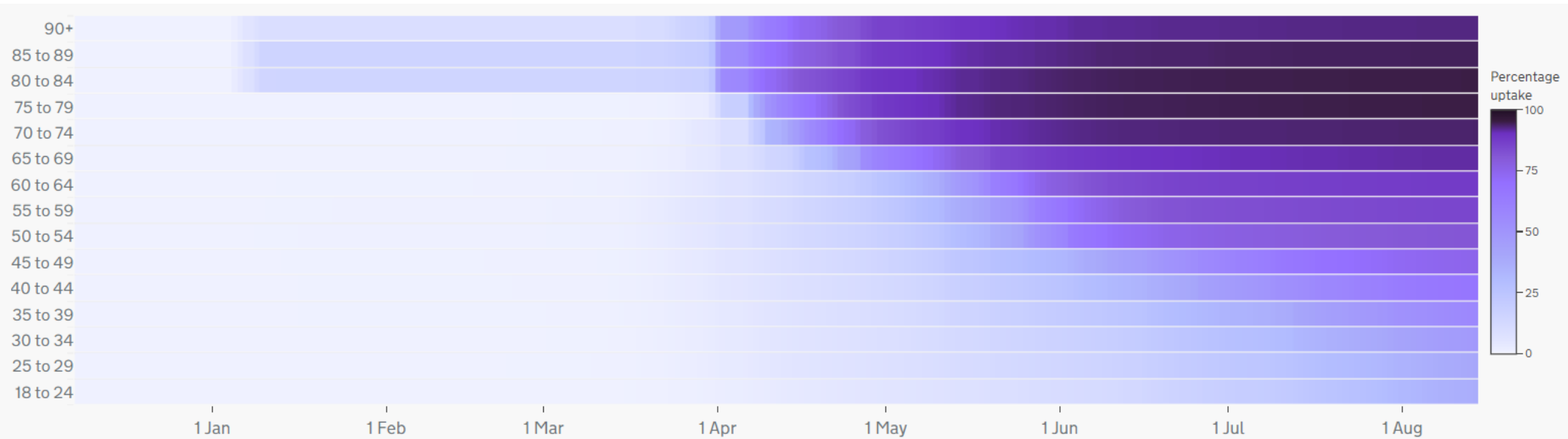
1st Dose



- Total percentage of people by age group who have received a COVID-19 vaccination, shown by vaccination date
- Daily figures include all vaccines that were given up to and including the date shown
- Over 98% of Bolton residents aged 60+ have received the 1st dose of the vaccination
- Uptake for 30+ residents has increased significantly over the last month for the 1st dose

Bolton Vaccinations by age

2nd Dose

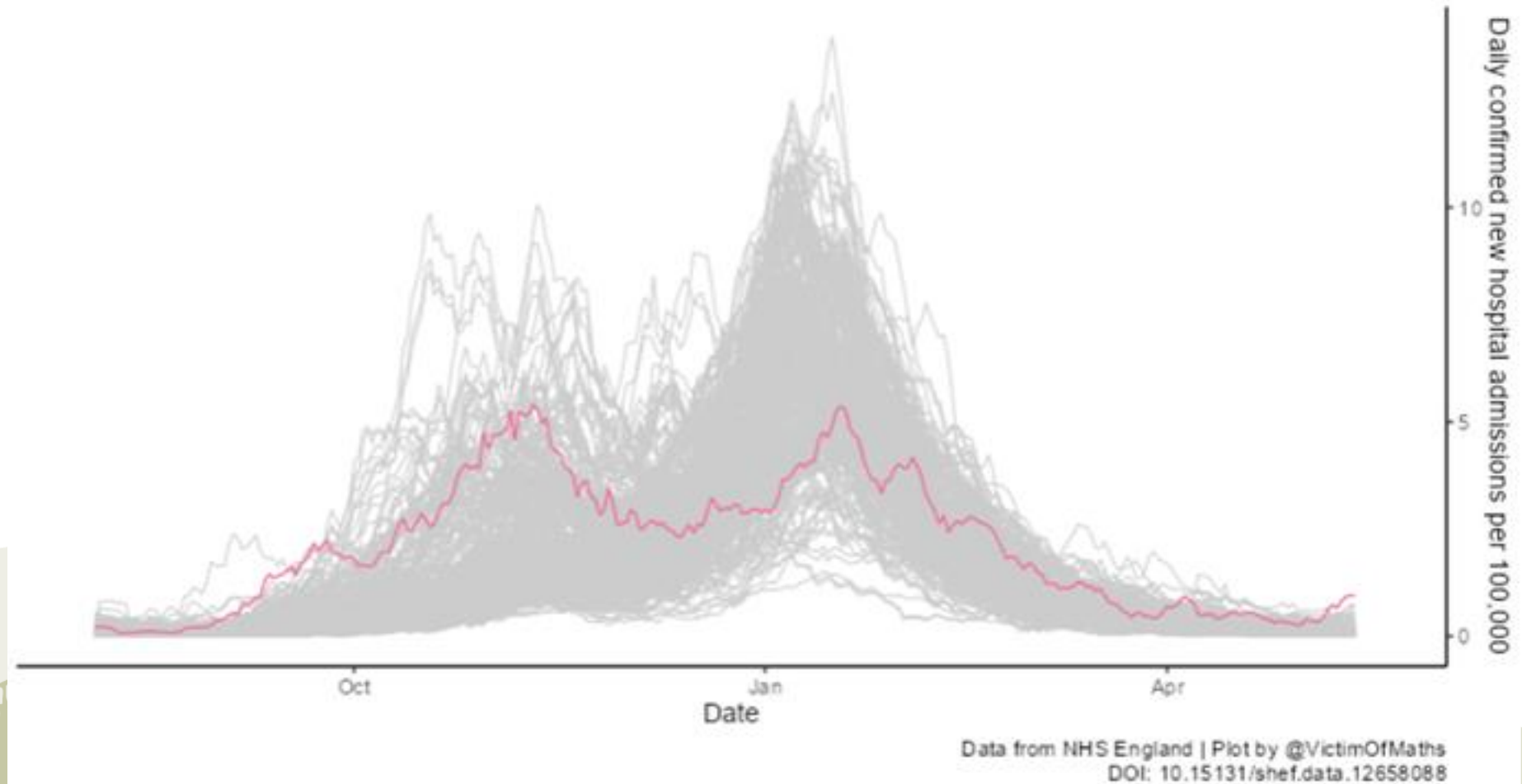


- Total percentage of people by age group who have received a COVID-19 vaccination, shown by vaccination date
- Daily figures include all vaccines that were given up to and including the date shown
- More than a third of all Bolton residents aged 30+ have now received the 2nd dose of the vaccination
- The proportion of residents to receive the 2nd dose aged 60 and over has increased to 95.9%

COVID-19 cases in hospitals in Bolton vs. the rest of England

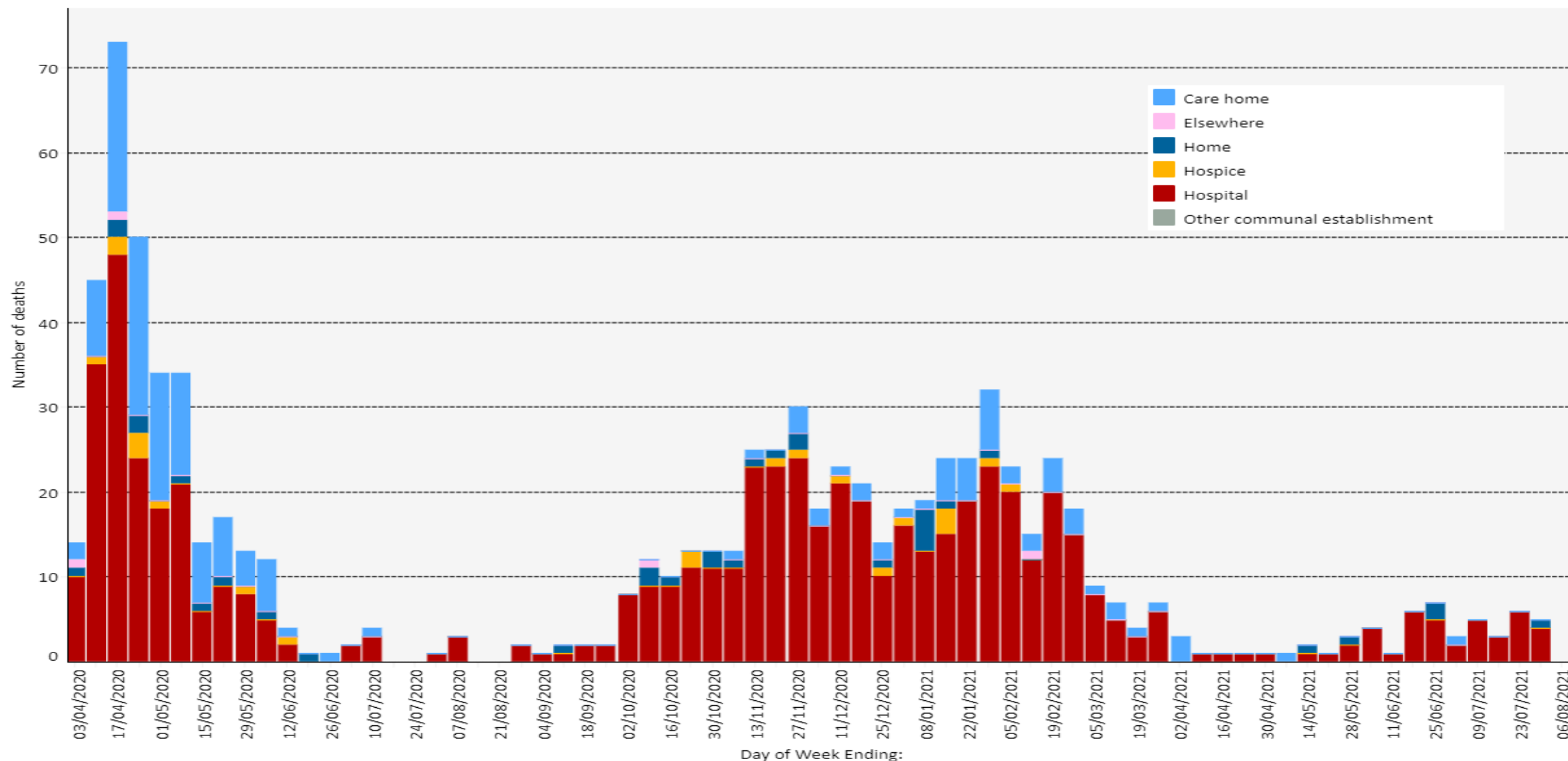
Rolling 7-day average of confirmed new COVID-19 admissions per 100,000 inhabitants in **Bolton** compared to other Local Authorities in England.
Data is published at NHS Trust level, so these figures are apportioned between Local Authorities using data on the proportion of admissions to each trust originating from each LA in 2016-18.
A small number of admissions from mental health specialist trusts are excluded from these plots.
Admissions data is published weekly, so may be missing for more recent days.

Rise in hospital admissions is apparent but not currently as marked as the rise in case rates



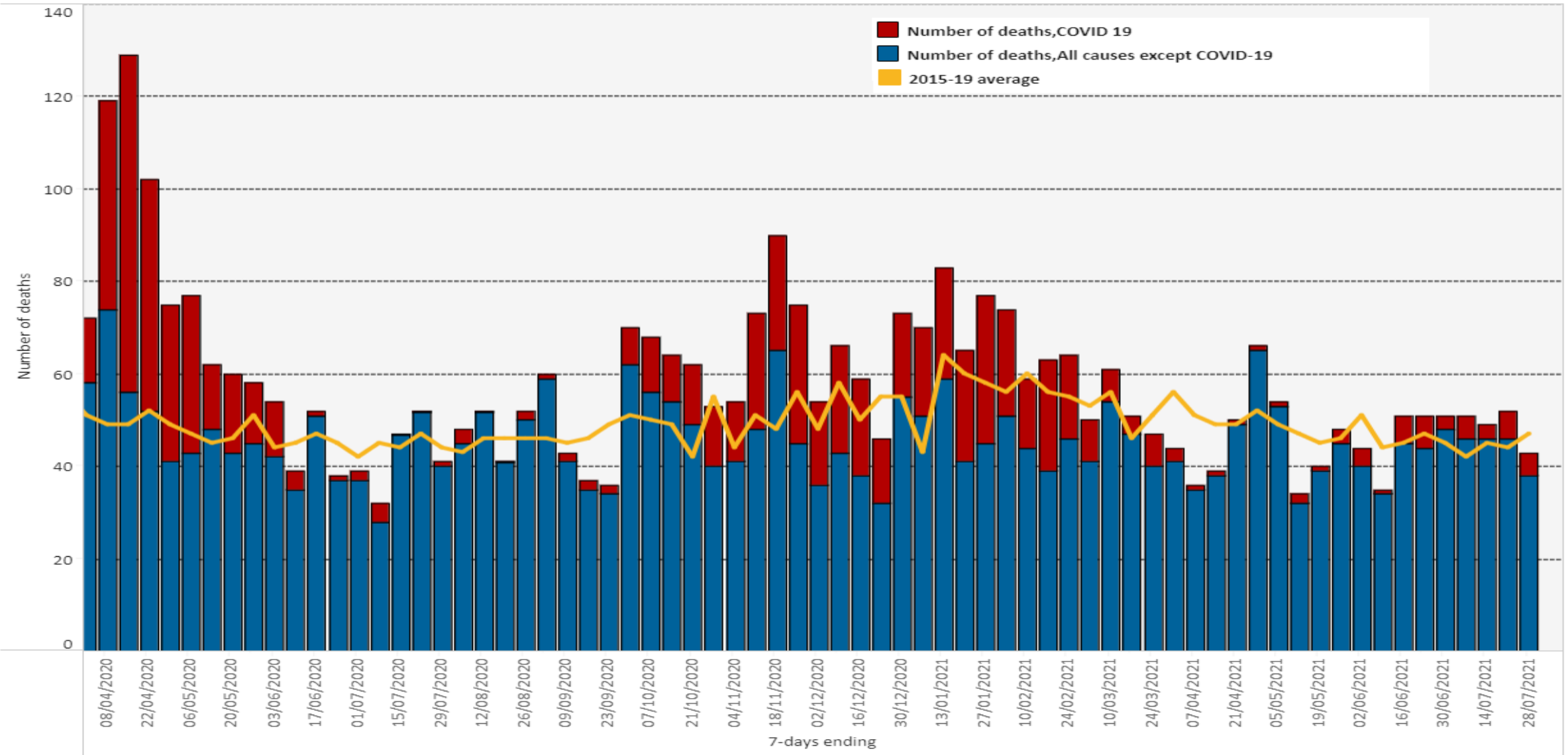
Deaths with COVID-19 by week and place of death, Bolton 2020

Place of death
(All)



- Total number of deaths to Bolton residents involving COVID-19 occurring up to 30th July 2021 = **839**
- Includes all deaths occurring elsewhere, e.g. care homes, hospice, at home
- Over the last month, there were **19** COVID-19 deaths in total occurring mainly in hospital and 1 at home
- For the most current week, **4** deaths occurred in hospital and **1** at home, registered for the 7 days up to 7th August 2021

Deaths by week of occurrence for Bolton



- From October to the end of January, the number of deaths to Bolton residents was consistently above the average for the last 5 years
- During February, Bolton has seen significant decreases in all deaths, with deaths from COVID-19 continuing to reduce into April
- Since the end of March, weekly numbers for all deaths and all causes except COVID in Bolton, were mainly below the average
- Bolton has seen an increase in COVID-19 deaths in over the last month

The SAVI is a measure of COVID-19 vulnerability for each MSOA in England

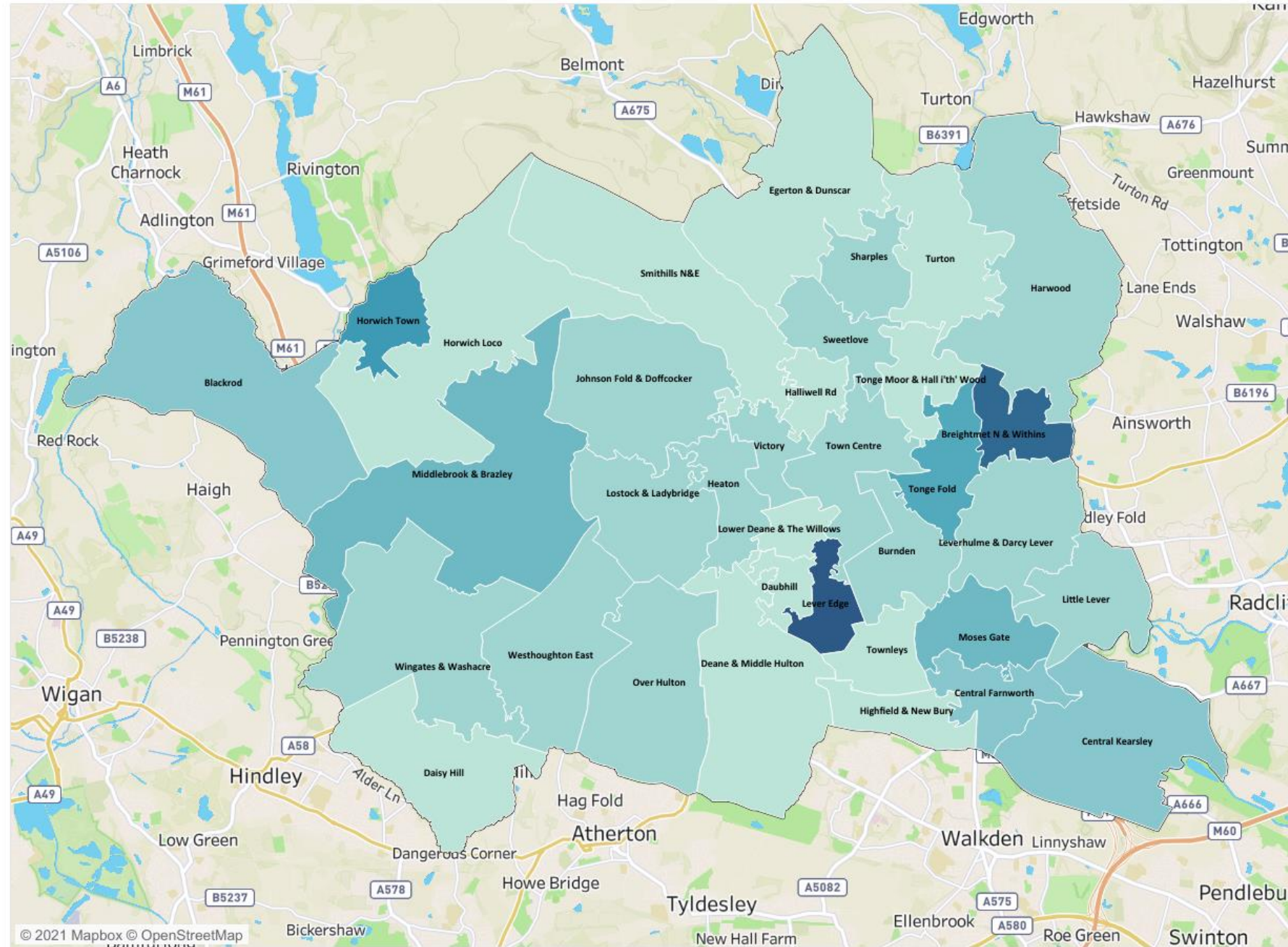
It investigates the association between BAME, Care Homes, overcrowded households and admissions for long-term health conditions

The areas with the highest increase in risk in Bolton are Brightmet N & Within and Lever Edge

Small Area Vulnerability Index

Measuring the increase in risk across Bolton by MSOA

INCREASE IN RISK
1.113 2.950



Find out more at:

www.boltonjsna.org.uk/coronavirus

